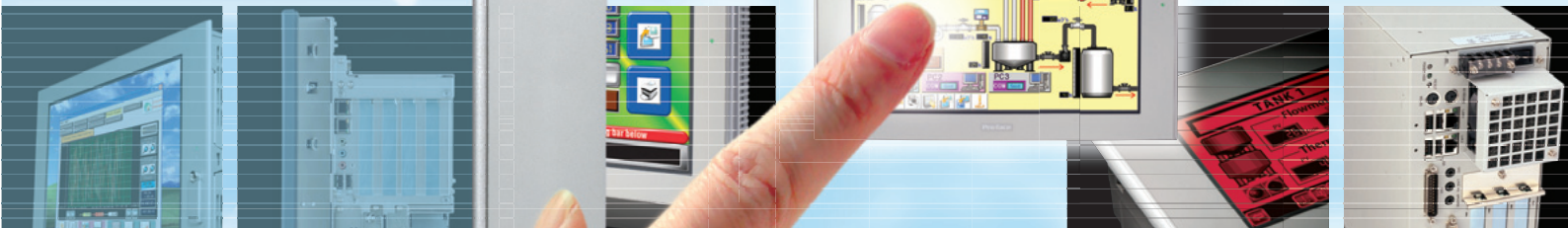


PRODUCT GUIDE

- GP4100 SERIES
- GP3000 SERIES
- LT3000 SERIES
- PS3000 SERIES
- PL3000 SERIES
- FP3000 SERIES
- GP2000 SERIES
- GP SERIES
- ST SERIES
- GLC SERIES
- LT SERIES
- PS SERIES
- PL SERIES
- UF SERIES



Desire to build an information gathering system while minimizing costs.
It's completely over-budget to install a display and PLC...

A System Maker upgraded with GP-3600T

GP3000 SERIES
Graphic Operator Interface

With GP-Pro EX that saves time for development, the GP-3600T adoption system can be developed quickly!

P3

I want to use a display. But screen creation seems to require so much effort...
...I tried using Z Company's display but couldn't master on screen creation.

B System Maker upgraded with LT-3300S

LT3000 SERIES
Graphic Logic Controller

A small-sized information gathering system can be realized with LT-3300S, without installing a PLC.

P6

We want to bring a PC into a production site with a bad environment.
...Building specialized equipment to avoid water vapor and dust would be too much trouble...

C Factory upgraded with PS-3710A

PS3000 SERIES
Smart Panel Computer

With PS-3710A, we can introduce a smooth production control system without the trouble of setting up equipment specifically for dust and drip prevention.

P7

We use a PC at our production site but we are worried about HDD trouble.
...Is there a computer we can use safely with a production line in continuous operation?

D Factory upgraded with PL-3000B

PL3000 SERIES
Industrial Computer

and

D Factory upgraded with FP-3900T

FP3000 SERIES
Industrial Flat Panel Monitor

Succeeded in avoiding HDD trouble incidents beforehand at site of continuous operation with PL-3000B, in order to reduce interruption time of production line.

P8

P16

Successful example index of how to find solutions with Pro-face

Is there a better method to obtain on-site business solutions?
How can we implement a system tailored to clients' needs?
Pro-face can provide an answer to such problems. Pro-face solutions will surely satisfy your needs.

Supporting software

Easy Operation HMI Screen Creation software GP-Pro EX P9	Add-on Software RPA P9 Remote monitoring software GP-Viewer EX P9 Add-on Software WinGP P10	Data management software Pro-Server EX P10
--	---	--

Conventional models

Graphic Operator Interface GP4100 SERIES GP SERIES P5 P11	Graphic Logic Controller GLC SERIES P13	Graphic Logic Controller LT SERIES P13	Smart Panel Computer PS SERIES P15	Industrial Panel Computer PL SERIES P15	Industrial Flat Panel Monitor UF SERIES Non-standard Product P16	Supporting software			
						Screen Editor and Logic Program Development software GP-PRO/PBIII C-Package03 P14	Data collection Software Pro-Server with Pro-Studio P14	Pro-Server Add-on Software GP-Viewer P14	Web Operation Software GP-Web P14

GP3000 SERIES

Graphic Operator Interface

Supporting software GP-Pro EX

Excellent value in a revolutionary operator interface



GP3000 SERIES is for those who desire...

Easy access to the status of equipment on site.

With GP3000...
Equipment by different makers, and models of different production dates can be connected to see the status of all sites on one display for assessment.

Remote monitoring of production status.

With GP3000...
Monitor site status in real time from a separate office.
▶ Please refer to pages 9-10 for more details on remote solutions.

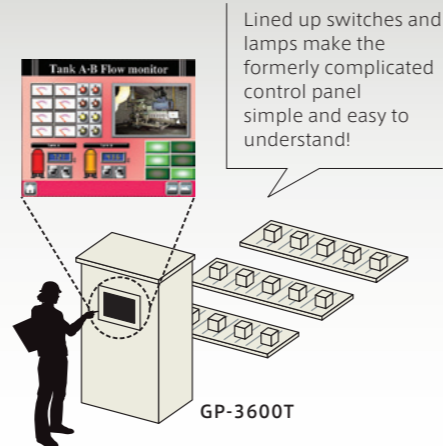
Visual confirmation of status for any occurrence of trouble.

With GP3000...
The video playback function allows to visually confirm the status for any occurrence of trouble and save any video recording of such.

A System Maker aims to introduce the display...

With GP-Pro EX that saves time for development, the GP-3600T adoption system can be developed quickly!

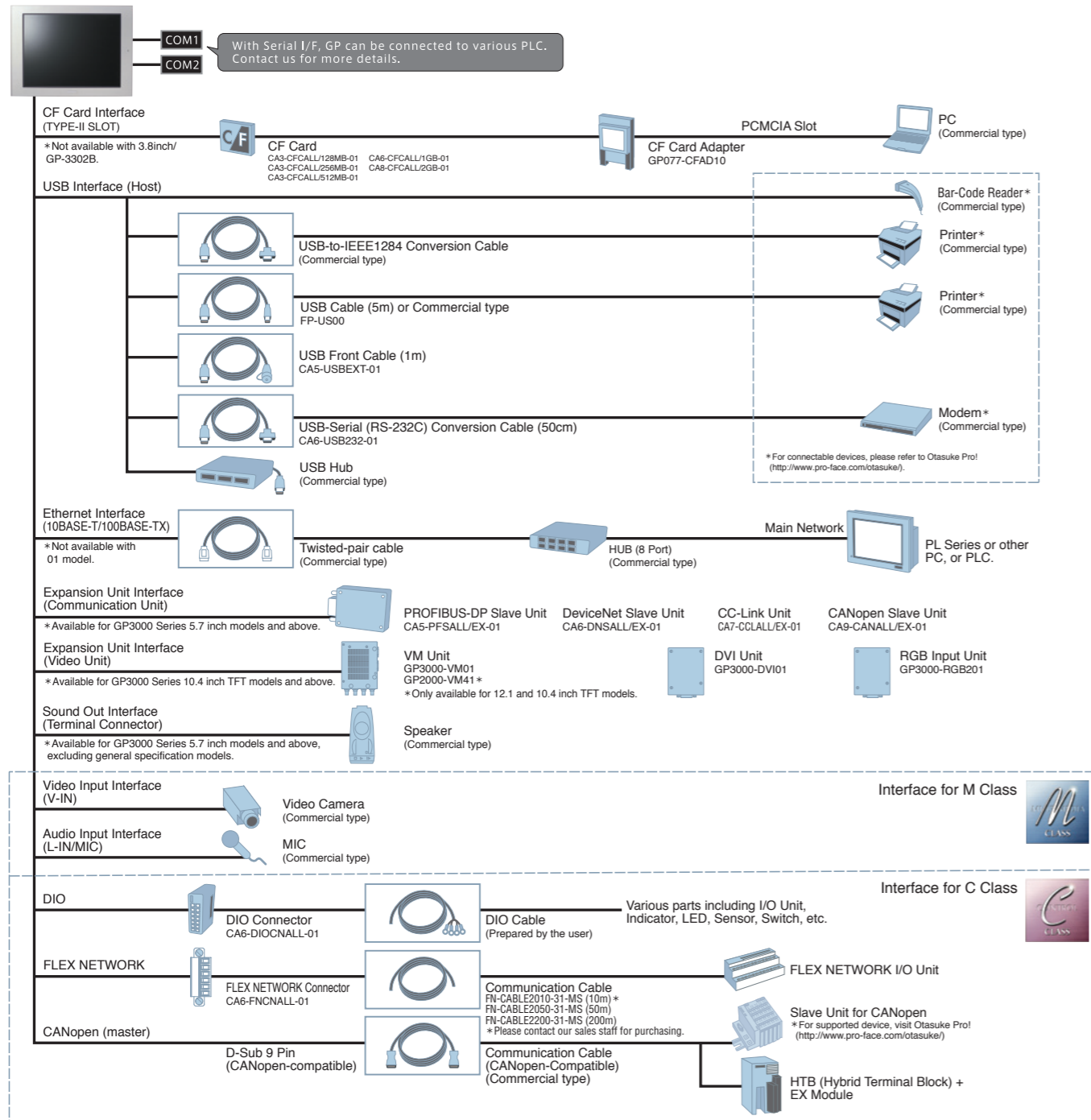
(A)System Maker created many control panels with switches and lamps lined up but recently has been investigating substitution with touch panels as changing to a flat layout is troublesome. However, introduction was difficult because the operator required for screen development was considered to cause a considerable burden. Thus, (A)System Maker re-applied its research to produce GP-3600T. The grounds for introduction were easy-to-use display creation software. Engineers using GP-Pro EX for the first time should have no trouble at all thanks to implementation of sensory image operation and should complete development in a considerably short amount of time. The display created may be used again for any size model, thus minimizing labor thereon. This was the objective of (A)System Maker.



Series Line-up	M Class Multimedia class				C Class Control class				S Class Standard class			
	M class features multimedia functions which enable interactive communication with your system.				C class features control functions with flexible system expansion to create intelligence in your system				S class is a standard model with enhanced features of human machine interface.			
15 inch	GP-3750T XGA TFT 65,536 colors [AC]AGP3750-T1-AF [DC]AGP3750-T1-D24											
	GP-3650T SVGA TFT 65,536 colors [AC]AGP3650-T1-AF				GP-3600T SVGA TFT 65,536 colors DIO (Sink) [AC]AGP3600-T1-AF-D81K [DC]AGP3600-T1-D24-D81K DIO (Source) [AC]AGP3600-T1-AF-D81C [DC]AGP3600-T1-D24-D81C FLEX NETWORK [AC]AGP3600-T1-AF-FN1M [DC]AGP3600-T1-D24-FN1M CANopen [AC]AGP3600-T1-AF-CA1M [DC]AGP3600-T1-D24-CA1M				GP-3600T SVGA TFT 65,536 colors [AC]AGP3600-T1-AF [DC]AGP3600-T1-D24			
12.1 inch	GP-3560T 3550T SVGA/VGA TFT 65,536 colors [AC]AGP3560-T1-AF [AC]AGP3550-T1-AF				GP-3500T VGA TFT 65,536 colors DIO (Sink) [AC]AGP3500-T1-AF-D81K [DC]AGP3500-T1-D24-D81K DIO (Source) [AC]AGP3500-T1-AF-D81C [DC]AGP3500-T1-D24-D81C FLEX NETWORK [AC]AGP3500-T1-AF-FN1M [DC]AGP3500-T1-D24-FN1M CANopen [AC]AGP3500-T1-AF-CA1M [DC]AGP3500-T1-D24-CA1M				GP-3510T 3500T SVGA/VGA TFT 65,536 colors [AC]AGP3510-T1-AF [AC]AGP3500-T1-AF [DC]AGP3500-T1-D24			
	GP-3500S/L VGA STN 4,096 colors MONO 16 shades [AC]AGP3500-S1-AF [DC]AGP3500-S1-D24				GP-3500S/L VGA STN 4,096 colors MONO 16 shades [AC]AGP3500-S1-AF [DC]AGP3500-S1-D24				GP-3500S/L VGA STN 4,096 colors MONO 16 shades [AC]AGP3500-S1-AF [DC]AGP3500-S1-D24			
10.4 inch	GP-3450T VGA TFT 65,536 colors [DC]AGP3450-T1-D24				GP-3400T/S VGA TFT 65,536 colors STN 4,096 colors DIO (Sink) [DC]AGP3400-T1-D24-D81K [DC]AGP3400-S1-D24-D81K DIO (Source) [DC]AGP3400-T1-D24-D81C [DC]AGP3400-S1-D24-D81C FLEX NETWORK [DC]AGP3400-T1-D24-FN1M [DC]AGP3400-S1-D24-CA1M				GP-3400T/S VGA TFT 65,536 colors STN 4,096 colors [DC]AGP3400-T1-D24 [DC]AGP3400-S1-D24			
	GP-3360T VGA TFT 65,536 colors [DC]AGP3360-T1-D24				GP-3300T/S/L QVGA TFT 65,536 colors STN 4,096 colors MONO 16 shades DIO (Sink) [DC]AGP3300-T1-D24-D81K [DC]AGP3300-S1-D24-D81K [DC]AGP3300-L1-D24-D81K DIO (Source) [DC]AGP3300-T1-D24-D81C [DC]AGP3300-S1-D24-D81C [DC]AGP3300-L1-D24-D81C FLEX NETWORK [DC]AGP3300-T1-D24-FN1M [DC]AGP3300-L1-D24-FN1M CANopen [DC]AGP3300-T1-D24-CA1M [DC]AGP3300-L1-D24-CA1M				GP-3310T 3300U*/T/S/L VGA/QVGA TFT 65,536 colors [DC]AGP3310-T1-D24 STN 4,096 colors [DC]AGP3300-U1-D24 MONO 16 shades [DC]AGP3300-T1-D24 [DC]AGP3300-S1-D24 [DC]AGP3300-L1-D24 * GP-3300U, Ultra High-brightness Model. For details, please visit our website.			
7.5 inch	GP-3310HT GP-3300HS/L VGA/QVGA * For details, please contact our Web site.				H Class Handheld Models*				GP-3301S/L 3302B QVGA STN 4,096 colors [DC]AGP3301-S1-D24 MONO 16 shades [DC]AGP3301-L1-D24 BLUE 16 shades [DC]AGP3302-B1-D24			
	There is a type compliant to DIO and FLEX NETWORK in the above-mentioned Control Class. DIO type 6 input points and 2 output points FLEX NETWORK type Bit variable input/output: 1024 points maximum CANopen type Integer variable input/output: 256 points maximum											
5.7 inch	International Safety Standards / [AC Type] [DC Type]				[AC] UL60950-1, UL1604*2, ANSI/ISA-12.12.01*2, CAN/CSA-C22.2 No.60950-1-03 (c-UL approval), CSA-C22.2 No.213-M1987 (c-UL approval)*2, EN55011 Class A, EN61000-6-2, EN60950-1, KCC*1 [DC] [GP-3200T/A] UL508, UL1604*2, ANSI/ISA-12.12.01*2, CSA-C22.2 No.14 or 142, CSA-C22.2 No.213*2, EN55011 Class A, EN61131-2, KCC*1 [GP-3300U] UL508, CSA-C22.2 No.14 or 142, EN55011 Class A, EN61000-6-2, KCC*1 [Handheld Models] UL508, CSA-C22.2 No.213-M1987 (c-UL approval)*2, EN55011 Class A, EN61000-6-2, KCC*1 [Except for GP-3200T/A, GP-3300U and Handheld Models] UL508, UL1604*2, ANSI/ISA-12.12.01*2, CSA-C22.2 No.14 or 142, CSA-C22.2 No.213*2, EN55011 Class A, EN61000-6-2, KCC*1 *1 Models certified by and being applied for the certification of KCC, please visit our website. > http://www.pro-face.com/company_e/proface/kcc_list_e.htm *2 Suitable for use in Class 1, Division 2, Groups A, B, C, and D Hazardous Locations only.				GP-3200T/A QVGA TFT 256 colors [DC]AGP3200-T1-D24 MONO (Amber/Red) [DC]AGP3200-A1-D24 8 shades			
									GP-3200T/A QVGA TFT 256 colors [DC]AGP3200-T1-D24 MONO (Amber/Red) [DC]AGP3200-A1-D24 8 shades			
3.8 inch												

Feature Comparison	Screen size	15 inch				12.1 inch				10.4 inch				7.5 inch				5.7 inch				3.8 inch			
		M	M	C	S	M	M	C	S	M	M	C	S	M	M	C	S	M	M	C	S	M	M	C	S
Interface	Ethernet	0	0	0	0	0	0	0	0	0	0	0	0	0	0	0	0	0	0	0	0	0	0	0	
	USB (Host)	2	2	2	2	2	2	2	2	1	1	1	1	1	1	1	1	1	1	1	1	1	1	1	
	Serial	2	2	2	2	2	2	2	2	2	2	2	2	2	2	2	2	2	2	2	2	2	2	2	
	VM Unit (Video MIX)	—	—	—	—	—	—	—	—	—	—	—	—	—	—	—	—	—	—	—	—	—	—	—	
	CF Card	—	—	—	—	—	—	—	—	—	—	—	—	—	—	—	—	—	—	—	—	—	—	—	
	AUX/Sound Out	—	—	—	—	—	—	—	—	—	—	—	—	—	—	—	—	—	—	—	—	—	—	—	
	Expansion Unit*7	—	—	—	—	—	—	—	—	—	—	—	—	—	—	—	—	—	—	—	—	—	—	—	
Functions	Event recorder	—	—	—	—	—	—	—	—	—	—	—	—	—	—	—	—	—	—	—	—	—	—		
	Video playback	—	—	—	—	—	—	—	—	—	—	—	—	—	—	—	—	—	—	—	—	—	—		
	Logic External I/O Program	—	—	—	—	—	—	—	—	—	—	—	—	—	—	—	—	—	—	—	—	—	—		
	program Internal operation	—	—	—	—	—	—	—	—	—	—	—	—	—	—	—	—	—	—	—	—	—	—		
	RPA (Remote PC Access)	—	—	—	—	—	—	—	—	—	—	—	—	—	—	—	—	—	—	—	—	—	—		
	Web server	—	—	—	—	—	—	—	—	—	—	—	—	—	—	—	—	—	—	—	—	—	—		
	Multiple connections	4	4	4	4	4	4	4	4	4	4	4	4	4	4	4	4	4	4	4	4	4	4		
PLC Program	Ladder Monitor	—	—	—	—	—	—	—	—	—	—	—	—	—	—	—	—	—	—	—	—	—	—		
	Device Monitor	—	—	—	—	—	—	—	—	—	—	—	—	—	—	—	—	—	—	—	—	—	—		
	Pass-through	—	—	—	—	—	—	—	—	—	—	—	—	—	—	—	—	—	—	—	—	—	—		
GP Program	Logic Monitor	—	—	—	—	—	—	—	—	—	—	—	—	—	—	—	—	—	—	—	—	—	—		
	Address Monitor	—	—	—	—	—	—	—	—	—	—	—	—	—	—	—	—	—	—	—	—	—	—		
	Online Edit	—	—	—	—	—	—	—	—	—	—	—	—	—	—	—	—	—	—	—	—	—	—		

*4. Ethernet is not available with Model GP-3301/3302B. *5. TFT type only. *6. Except Model GP-3302B. *7. For field bus unit installation. Cannot be used concurrently with VM Unit. *8. Except Model GP-3301/3302B. *9. Excludes Model GP-3510T. *10. GP-3310T only.



GP4100 SERIES

Graphic Operator Interface

Compact graphic operator interface with features selected from all Pro-face HMI products.



GP4105G 3.4 inch Backlight Colors Green/Orange/Red
GP4106G

GP4105G1D [RS-232C] [DC24V]
 GP4106G1D [RS-422/485] [DC24V]

- 200 x 80 pixel resolution
- 16 levels of grayscale
- USB I/F x 2 (Type-A/mini-B)



GP4105W 3.4 inch Backlight Colors White/Pink/Red
GP4106W

GP4105W1D [RS-232C] [DC24V]
 GP4106W1D [RS-422/485] [DC24V]

- 200 x 80 pixel resolution
- 16 levels of grayscale
- USB I/F x 2 (Type-A/mini-B)

International Safety Standards

UL508, CSA-C22.2 No.142, EN61000-6-2, EN61000-6-4, EN61131-2, GOST-R, C-Tick mark, KCC

LT3000 SERIES

Graphic Logic Controller

Supporting software GP-Pro EX

All-in-one display/operation function on controller



LT-3201A

3.8 inch QVGA

LT3201-A1-D24-K (Sink Output Type) [DC24V]
 LT3201-A1-D24-C (Source Output Type) [DC24V]

- 12-point inputs, 6-point outputs
- Interface for Pro-face's EX Modules (Up to two EX modules can be connected)
- Monochrome Amber / Red LCD
- 320 x 240 pixels
- Black and White - 8 Shades

I/F | AUX Unit I/F x 1 | USB x 1 | EX Module I/F x 1



LT-3301L

5.7 inch QVGA

LT3301-L1-D24-K (Sink Output Type) [DC24V]
 LT3301-L1-D24-C (Source Output Type) [DC24V]

- 16-point inputs, 16-point outputs
- Interface for Pro-face's EX Modules (Up to three EX modules can be connected)
- Monochrome LCD
- 320 x 240 pixels
- Black and White - 16 Shades

I/F | COM x 1 | AUX Unit I/F x 1 | USB x 1 | EX Module I/F x 1



LT-3300S/L

5.7 inch QVGA

LT3300-S1-D24-K (Sink Output Type) [DC24V]
 LT3300-S1-D24-C (Source Output Type) [DC24V]
 LT3300-L1-D24-K (Sink Output Type) [DC24V]
 LT3300-L1-D24-C (Source Output Type) [DC24V]

- 16-point inputs, 16-point outputs
- Interface for Pro-face's EX Modules (Up to three EX modules can be connected)
- STN Color LCD (LT-3300S) / Monochrome LCD (LT-3300L)
- 320 x 240 pixels
- 4,096 Colors (LT-3300S) / Black and White - 16 Shades (LT-3300L)

I/F | COM x 1 | Ethernet x 1 | AUX Unit I/F x 1 | USB x 1 | EX Module I/F x 1

International Safety Standards

[LT-3201A] UL508, ANSI/ISA-12.12.01-2000 Rev. B or later*, CSA-C22.2 No.142-M1987, CSA-C22.2 No.213-M1987*, EN55011 Class A, EN61000-6-2, KCC

[LT-3301L and LT-3300S/L] UL508, ANSI/ISA-12.12.01-2007 Rev. 1 or later*, CSA-C22.2 No.142-M1987, CSA-C22.2 No.213-M1987*, EN55011 Class A, EN61000-6-2, KCC

* Suitable for use in Class I, Division 2, Groups A, B, C, and D Hazardous Locations only.

LT3000 SERIES is for those who desire...

Adding a display while avoiding extra cost.

With LT3000...

Control, display, and operation are performed by one piece of equipment to cut down on equipment and keep cost at a minimum.

Possible future system expansion.

With LT3000...

All 13 types of I/O units may be expanded into 3 modules maximum (LT-3201A can be expanded into 2 modules maximum). Flexible options for equipment and function upgrades.

EX Modules

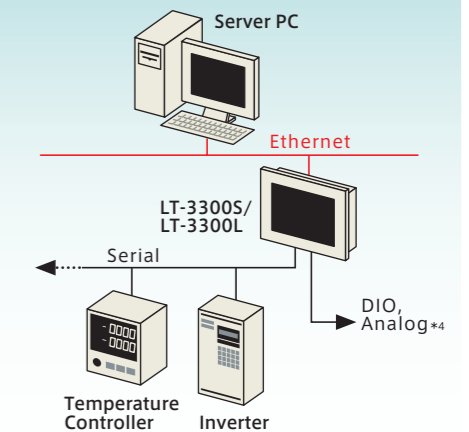
- 8-Point Input Module
- 16-Point Input Module
- 8-Point Relay Output Module
- 16-Point Relay Output Module
- 8-Point Sink Output Module
- 16-Point Sink Output Module
- 8-Point Source Output Module
- 16-Point Source Output Module
- 4-Point Input/4-Point Output Module
- 2-ch Analog Input Module
- Thermocouple Pt100 Input / 1-ch Analog Output Module
- 2-ch Analog Input / 1-ch Analog Output Module
- 1-ch Analog Output Module
- 1-ch Analog Output Module

B Manufacturer aims for low-cost system development...

Example Solutions

A small-sized information gathering system can be realized with LT-3300S, without installing a PLC.

[B] System Maker was entrusted by a client to introduce IT on site. However, building a system using a display and PLC requires costs for hardware that exceed the budget. That is why this manufacturer decided to adopt LT-3300S. This controller not only includes display, operation, and control functions all in one piece of equipment, but with the Serial I/F*3 included, direct connection to equipment on site is also possible even without a PLC. Furthermore, it is possible to send information obtained on site to a main computer thanks to the Ethernet I/F mounted. A system was developed which saves on costs using the smallest possible unit.



*3. LT-3201A is not equipped with Serial I/F. *4. Analog input/output and temperature input is possible with the EX module.

PS3000 SERIES

Smart Panel Computer

Supporting software GP-Pro EX WinGP

Slim design for harsh production environment.



PS-3450A/3451A

8.4 inch SVGA 1 Slot (PS-3450A)

PS3450A-T41 (Intel® Celeron® M 1.0GHz) [AC100-240V]
 PS3450A-T41-24V (Intel® Celeron® M 600MHz) [DC24V]
 PS3451A-T41-24V (Fanless Intel® Celeron® M 600MHz) [DC24V]

- Intel® Celeron® M 1.0GHz or M 600MHz
- Windows® 2000/XP/XP Embedded
- PC/AT-compatible panel computers
- HDD or CF card-bootable

I/F PS-3450A PS-3451A
 COM×2 / USB×4 COM×2 / USB×4
 LAN×2 / CF×2 LAN×2 / CF×2
 Sound×1 / PCI×1 Sound×1

PS-3650A/3651A

12.1 inch XGA 1 Slot (PS-3650A)

PS3650A-T42/T42S (Intel® Celeron® M 1.3GHz) [AC100-240V]
 PS3650A-T42-24V/T42S-24V (Intel® Celeron® M 1.3GHz) [DC24V]
 PS3651A-T42/T42S (Fanless Intel® Celeron® M 600MHz) [AC100-240V]
 PS3651A-T42-24V/T42S-24V (Fanless Intel® Celeron® M 600MHz) [DC24V]

- Intel® Celeron® M 1.3GHz or Intel® Celeron® M 600MHz
- Windows® 2000/XP/XP Embedded
- PC/AT-compatible panel computers
- HDD or CF card-bootable

I/F PS-3650A PS-3651A
 USB×5 / LAN×2 COM×2 / USB×4
 CF×1 / PCMCIA×1 CF×1 / PCMCIA×1
 Sound×1 / PCI×1 Sound×1
 (T42 models) COM×1 / RAS×1 (T42 models) COM×1 / RAS×1
 (T42S models) COM×2 (T42S models) COM×2

PS-3710A/3711A

15 inch XGA 1 Slot (PS-3710A)

PS3710A-T42 (Pentium® M 1.6GHz) [AC100-240V]
 PS3710A-T42-24V (Pentium® M 1.6GHz) [DC24V]
 PS3711A-T42 (Fanless Intel® Celeron® M 600MHz) [AC100-240V]
 PS3711A-T42-24V (Fanless Intel® Celeron® M 600MHz) [DC24V]

- Intel® Pentium® 4-M 1.7GHz or Intel® Pentium® M 1.6GHz or Intel® Celeron® M 600MHz
- Windows® 2000/XP/XP Embedded
- PC/AT-compatible panel computers
- HDD or CF card-bootable

I/F PS-3710A PS-3711A
 COM×4 / USB×5 / LAN×2 COM×2 / USB×5 / LAN×2
 CF×1 / DVD-ROM×1 / FDD×1 CF×1 / PCMCIA×2 / PS/2×1
 PCMCIA×2 / PS/2×1 Sound×1 / RAS×1
 Sound×1 / RAS×1 / PCI×1 Sound×1 / RAS×1

International Safety Standards

[PS-3450A/3451A] UL508, CSA-C22.2, No.142-M1987, EN55011 Class A, EN61000-6-2, EN60950-1(AC models only), 47 CFR Part 15 Class A
 [PS-3650A/3651A] UL508, CSA-C22.2, No.142-M1987, EN55011 Class A, EN61000-6-2, EN60950(AC models only), 47 CFR Part 15 Class A, KCC (AC models only)
 [PS-3710A/3711A] UL508, CSA-C22.2, No.142-M1987(c-UL Approval), ANSI/ISA-12.12.01-2007*, CSA-C22.2 No.213-M1987(c-UL Approval)*, EN55011 Class A, EN61000-6-2, EN60950-1(AC models only), 47 CFR Part 15 Class A, KCC (AC models only)

* Suitable for use in Class I, Division 2, Groups A, B, C, and D Hazardous Locations only.

PS3000 SERIES is for those who desire...

Those for whom creating a visual screen is troublesome.

With PS3000...

Various peripheral devices can be easily connected using screens created with GP-Pro EX.

Please refer to "WinGP" of page 9 for more details.

Prevent HDD trouble.

With PS3000...

HDD-less for Windows XP Embedded models. Greatly reduce the risk of system failure.

We want to implement predictive maintenance for equipment...

With PS3000...

Prevent trouble beforehand using the RAS function, which detects signs of malfunction.

PL3000 SERIES

Industrial Computer

Supporting software GP-Pro EX WinGP

Rugged and High-Reliability Industrial Computers



PL-3600T/K

12.1 inch SVGA 4/2 Slots

APL3600-TA, APL3600-KA [AC100-240V]
 APL3600-TD, APL3600-KD [DC24V]

- Core™ Duo 2.0GHz Intel® Celeron® M 440 1.86GHz
- Windows® XP/XP Embedded
- PC/AT-compatible panel computers
- HDD or CF card-bootable

I/F COM×4 / USB×5 / LAN×2
 PCI×4 or 2 / CF×1 / DVI-I×1 / RAS×1
 SOUND×1 / DVD-ROM×1 (option)

PL-3700T/K

15 inch XGA 4/2 Slots

APL3700-TA, APL3700-KA [AC100-240V]
 APL3700-TD, APL3700-KD [DC24V]

- Core™ Duo 2.0GHz Intel® Celeron® M 440 1.86GHz
- Windows® XP/XP Embedded
- PC/AT-compatible panel computers
- HDD or CF card-bootable

I/F COM×4 / USB×5 / LAN×2
 PCI×4 or 2 / CF×1 / DVI-I×1 / RAS×1
 SOUND×1 / DVD-ROM×1 (option)

PL-3900T

19 inch SXGA 4/2 Slots

APL3900-TA [AC100-240V]
 APL3900-TD [DC24V]

- Core™ Duo 2.0GHz Intel® Celeron® M 440 1.86GHz
- Windows® XP/XP Embedded
- PC/AT-compatible panel computers
- HDD or CF card-bootable

I/F COM×4 / USB×5 / LAN×2
 PCI×4 or 2 / CF×1 / DVI-I×1 / RAS×1
 SOUND×1 / DVD-ROM×1 (option)

PL-3000B

4/2 Slots

APL3000-BA (Core™ Duo 2.0GHz) [AC100-240V]
 APL3000-BD (Core™ Duo 2.0GHz) [DC24V]
 APL3000-BD (Core™ Duo 2.0GHz) [DC24V]

- Core™ Duo 2.0GHz or Intel® Celeron® M440 1.86GHz
- Windows® 2000/XP/XPE/XP Embedded

I/F COM×4 / USB×4 / LAN×2
 PCI×4 or 2 / CF×1 / DVI-I×1 / RAS×1
 DVD-ROM×1 (option)

International Safety Standards

[PL-3600T, PL-3700T and PL-3900T] UL508, CSA-C22.2, No.142-M1987, ANSI/ISA-12.12.01-2007*, CSA-C22.2 No.213-M1987(c-UL Approval)*, EN55011 Class A, EN61000-6-2, EN60950-1(AC models only), 47 CFR Part 15 Class A, KCC

[PL-3600K and PL-3700K] UL508, CSA-C22.2, No.142-M1987, ANSI/ISA-12.12.01-2007*, CSA-C22.2 No.213-M1987(c-UL Approval)*, EN55011 Class A, EN61000-6-2, EN60950-1(AC models only)
 [PL-3000B] UL508, CSA-C22.2, No.142-M1987, ANSI/ISA-12.12.01-2007*, CSA-C22.2 No.213-M1987(c-UL Approval)*, EN55011 Class A, EN61000-6-2, EN60950-1(AC models only), 47 CFR Part 15 Class A

*1 APL3600-TA, APL3700-TA and APL3900-TA are certified only by KCC.

*2 Suitable for use in Class I, Division 2, Groups A, B, C, and D Hazardous Locations only.

PL SERIES is for those who desire...

Those for whom creating a visual screen is troublesome.

With PL3000...

Various peripheral devices can be easily connected using screens created with GP-Pro EX.

Please refer to "WinGP" of page 9 for more details.

Those for whom a high performance FA computer is necessary

With PL3000...

Equipped with Core™ Duo 2.0GHz and high-speed CPU, PL offers a solution for control requiring high level processing.

We want to use PC at a site with continuous operation.

With PL3000...

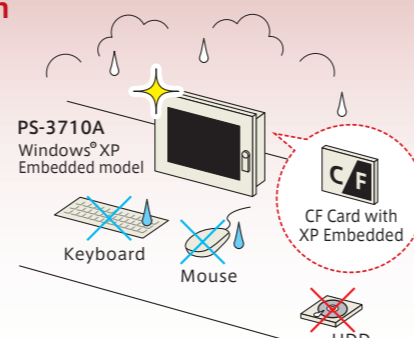
HDD replacement is possible without shutting off system using the "soft mirror" and "hot swap".

Factory is concerned about a bad environment on site...

Example Solutions

With PS-3710A, we can introduce a smooth production control system without the trouble of setting up equipment specifically for dust and drip prevention.

Because the manufacturing process at [C] Factory generates dust and steam, a computer requiring the use of a keyboard cannot easily be brought on site. Thus, the PS-3710A was introduced. This compact computer equipped with a touch panel eliminates both concern over damage to a keyboard and the need for drip or dust-proof equipment. Furthermore, HDD-less offers superior reliability. Finally, we were able to build a strong production system at a site with a harmful environment, for which even maintenance does not require opening up the computer thanks to a front-mounted USB.

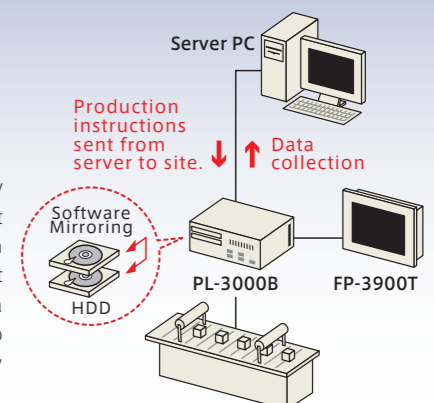


Factory's aim to conquer HDD trouble...

Example Solutions

Succeeded in avoiding HDD trouble incidents beforehand at site of continuous operation with PL-3000B, in order to reduce interruption time of production line.

[D] manufacturer experienced successive HDD trouble with the PC on-site, possibly due to the harsh conditions of its continuous operation. Stopping the equipment each time for repair caused a great loss. As a result of careful consideration PL-3000B was introduced. With its "Software Mirror Utility", this model makes it possible to constantly mirrored HDD data from two HDDs[RAID1] without a burden on CPU. In the case that trouble occurs on either HDD, it is possible to exchange the HDD cartridge without stopping the line, thus successfully reducing outage time and substantially improving the line's rate of operation.



Total easy operation from screen creation to programs, simulation, and operation.

| Screen Editor Software |

GP-Pro EX

Created in the pursuit of easy operation that can be performed without trouble even by first-timers.

Corresponds to all GP 3000 series, LT 3000 series, PS 3000 series and PL 3000 series.

Download and use samples of screens, materials, and features from the "Otasuke-Pro!" support site.



【 Connection device sample 】



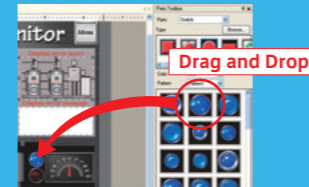
【 Screen sample 】



01 Screen creation

Operator required to create graphs is reduced with an easy-to-understand screen interface and touch operation.

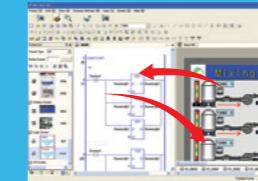
Select, drag, and drop for easy screen creation.



02 Programs

Control functions can be developed without trouble using a single software.

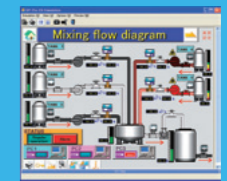
Logic program can easily be created using common ladder language thanks to the "Logic Program Function".



03 Simulation

You can conveniently verify operations by computer before transferring data to actual equipment.

Conveniently verify operations with "GP-Pro EX Simulation". Confirm debug using only a PC.



04 Operation

Display collected data in a chronological graph for practical use!

Chronologically display collected data using the "Historical Trend Graph". Display old data stored in buffering area, USB memory, or CF card.



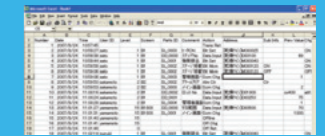
Simultaneously record and verify the status of equipment while an alarm sounds.

Obtain PLC alarm messages and device values simultaneously using the "Interconnected Alarm & Log" to quickly determine the cause.



Record information on workers' operations and analyze trouble.

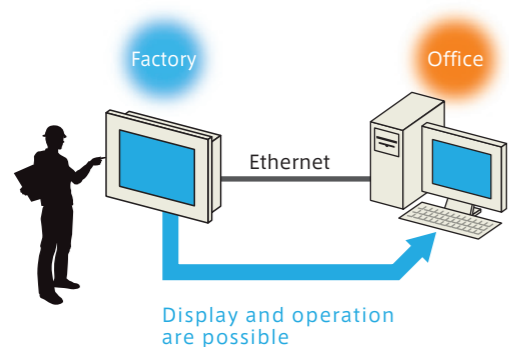
Stores "Who" "When" and "How" any operation was performed as an "Operation Log". Greatly reduce time required for analysis of trouble by referring to the "Operation Log" when an abnormality occurs.



Add-on software

RPA (Remote PC Access)

With RPA, it is possible to view information on the screen of a computer in a separate location from the GP display.

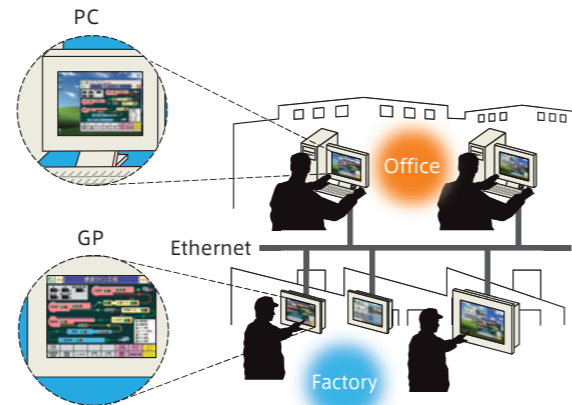


It is possible to access and work on computers from a site's GP via Ethernet, without bringing a laptop computer to the site. Information kept in the office computer, such as the blueprint and maintenance manual can therefore be viewed as well.

Remote monitoring software

GP-Viewer EX

Remote surveillance of GP screen on computer from office far away from site!

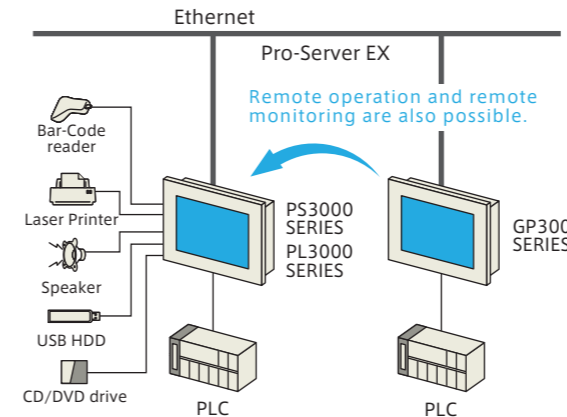


It is possible to view the site's actual GP screen and visually grasp a status using a computer connected to the Ethernet at a remote location. Trouble on-site can therefore be determined from the office.

PC HMI Run time

WinGP

Screen created with GP-Pro EX can be used in a Windows computer!

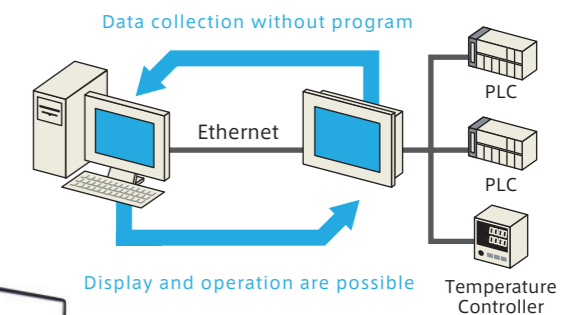


Until now, specialized software and skill were required to create FA computer screens. However, with WinGP, it has become possible to easily create screens using GP-Pro EX. *WinGP works with ordinary PCs as well.

Data management software

Pro-Server EX

Easily gather information on the display and equipment connected at low cost with the screen created using GP-Pro EX as a platform!



It is possible to collect information for the site following simple configuration. Information on the display may be collected on a main computer via Ethernet, and sent from the main computer to the site for production specifications.

GP2000 SERIES

Graphic Operator Interface

Supporting software GP-PRO/PBIII

Beautiful Graphics and Easy Programming



Main features of GP2000 SERIES

- Comes equipped with CF card I/F** Production information and BPM data may be stored on CF card. Screen set-up and back-up online can be rapidly performed.
- Comes equipped with Ethernet I/F** Data can be sent and received via Ethernet. Operation status of production equipment can be collected on a main computer to facilitate practical use of data.
- VM unit I/F may be mounted** Video surveillance is possible by attaching the optional VM unit to closely keep track of unmanned production lines.

Other Models

GP SERIES

ST SERIES



GP-37W2B
GP37W2-BG41-24V [DC24V]

- Monochrome, Blue-mode LCD
- 320 × 240 pixels
- Blue and White
- 1MB FEPROM

 I/F | COM / Tool Connector



3.8 inch

- Fastest Compact Model
- 320 × 240 pixels
- High Visibility Amber Screen
- Maintenance-free Backlight
- Function Keys

RS-422 Type
ST400-AG41-24V [DC24V]
I/F | COM / Tool Connector

MPI Type
ST402-AG41-24V [DC24V]
I/F | COM / Expansion COM / Tool Connector

RS-232C Type
ST401-AG41-24V [DC24V]
I/F | COM / Tool Connector

Ethernet Type
ST403-AG41-24V [DC24V]
I/F | COM / Tool Connector / Ethernet I/F

International Safety Standards

[GP-37W2B] UL1950(Third Edition), dated July 26th, 1995, CAN/CSA-C22.2, No.950-95, EN55011 class A and EN50082-2, CNS13438(Class A)
 [ST SERIES] UL508, UL1604 (Rev. A or later)*, CAN-C22.2 No.213-M1987*, CAN-C22.2 No.14, EN55011 class A and EN61000-6-2, KCC (ST401-AG41-24V)
 * Suitable for use in Class I, Division 2, Groups A, B, C, and D Hazardous Locations only.

GP2000 SERIES

Powerful Performance and Ethernet I/F Models

Built-in CF Card I/F Models

12.1 inch
SVGA



GP-2600T
GP2600-TC41-24V [DC24V]
GP2600-TC11 [AC100-240V]

- TFT Color LCD
- 800 × 600 pixels
- 256 Colors
- 4MB FEPROM

 I/F | Ethernet / CF Card / Sound / AUX / COM / Expansion COM / Printer / Tool Connector / Expansion BUS / VM Unit / Expansion CF Card



GP-2601T
GP2601-TC11 [AC100-240V]

- TFT Color LCD
- 800 × 600 pixels
- 256 Colors
- 4MB FEPROM

 I/F | CF Card / AUX / COM / Printer / Tool Connector / Expansion BUS

10.4 inch
VGA



GP-2500T
GP2500-TC41-24V [DC24V]
GP2500-TC11 [AC100-240V]

- TFT Color LCD
- 640 × 480 pixels
- 256 Colors
- 4MB FEPROM

 I/F | Ethernet / CF Card / Sound / AUX / COM / Expansion COM / Printer / Tool Connector / Expansion BUS / VM Unit / Expansion CF Card



GP-2501T
GP2501-TC11 [AC100-240V]

- TFT Color LCD
- 640 × 480 pixels
- 256 Colors
- 2MB FEPROM

 I/F | CF Card / AUX / COM / Printer / Tool Connector / Expansion BUS



GP-2501S
GP2501-SC11 [AC100-240V]

- STN Color LCD
- 640 × 480 pixels
- 64 Colors
- 2MB FEPROM

 I/F | CF Card / AUX / COM / Printer / Tool Connector / Expansion BUS



GP-2500L
GP2500-LG41-24V [DC24V]

- Monochrome LCD
- 640 × 480 pixels
- Black & White, Gray Scale
- 4MB FEPROM

 I/F | Ethernet / CF Card / Sound / AUX / COM / Expansion COM / Printer / Tool Connector / Expansion BUS / Expansion CF Card



GP-2501L
GP2501-LG41-24V [DC24V]

- Monochrome LCD
- 640 × 480 pixels
- Black & White, Gray Scale
- 2MB FEPROM

 I/F | CF Card / AUX / COM / Printer / Tool Connector / Expansion BUS

7.4 inch
VGA



GP-2400T
GP2400-TC41-24V [DC24V]

- TFT Color LCD
- 640 × 480 pixels
- 256 Colors
- 4MB FEPROM

 I/F | Ethernet / CF Card / Sound / AUX / COM / Expansion COM / Printer / Tool Connector / Expansion BUS



GP-2401T
GP2401-TC41-24V [DC24V]

- TFT Color LCD
- 640 × 480 pixels
- 256 Colors
- 2MB FEPROM

 I/F | CF Card / AUX / COM / Printer / Tool Connector / Expansion BUS

5.7 inch
QVGA

Aluminum Body for Superb Cooling and Dust Resistance



GP-2300T
GP2300-TC41-24V [DC24V]

- TFT Color LCD
- 320 × 240 pixels
- 256 Colors
- 2MB FEPROM

 I/F | Ethernet / CF Card / COM / Expansion COM / Printer / Tool Connector / Expansion BUS



GP-2301T
GP2301-TC41-24V [DC24V]

- TFT Color LCD
- 320 × 240 pixels
- 256 Colors
- 1MB FEPROM

 I/F | CF Card / COM / Tool Connector / Expansion BUS



GP-2300S
GP2300-SC41-24V [DC24V]

- STN Color LCD
- 320 × 240 pixels
- 64 Colors
- 2MB FEPROM

 I/F | Ethernet / CF Card / COM / Expansion COM / Printer / Tool Connector / Expansion BUS



GP-2301S
GP2301-SC41-24V [DC24V]

- STN Color LCD
- 320 × 240 pixels
- 64 Colors
- 1MB FEPROM

 I/F | CF Card / COM / Tool Connector / Expansion BUS



GP-2300L
GP2300-LG41-24V [DC24V]

- Monochrome LCD
- 320 × 240 pixels
- Black & White, Gray Scale
- 2MB FEPROM

 I/F | Ethernet / CF Card / COM / Expansion COM / Printer / Tool Connector / Expansion BUS



GP-2301L
GP2301-LG41-24V [DC24V]

- Monochrome LCD
- 320 × 240 pixels
- Black & White, Gray Scale
- 1MB FEPROM

 I/F | CF Card / COM / Tool Connector / Expansion BUS

Handheld Models

GP2000H SERIES



GP-2401HT
GP2401H-TC41-24V [DC24V]

- TFT Color LCD
- 640 × 480 pixels
- 256 Colors
- 2MB FEPROM

 I/F | Handheld / CF Card / COM / Tool Connector

GP-2301HS
GP2301H-SC41-24V [DC24V]

- STN Color LCD
- 320 × 240 pixels
- 64 Colors
- 1MB FEPROM

 I/F | Handheld / CF Card / COM / Tool Connector

GP-2301HL
GP2301H-LG41-24V [DC24V]

- Monochrome LCD
- 320 × 240 pixels
- Black & White, Gray Scale
- 1MB FEPROM

 I/F | Handheld / CF Card / COM / Tool Connector

International Safety Standards

[AC] [GP-2600T and GP-2500T] UL60950, UL1604*, CAN/CSA-C22.2 No.60950-00, CAN/CSA-C22.2 No.213-M1987, EN55011 Class A and EN61000-3-2, EN61000-3-3, EN61000-6-2, EN60950, KCC
 [GP-2601T] UL60950, UL1604*, CAN/CSA-C22.2 No.60950-00 (c-UL approval), CSA-C22.2 No.213-M1987 (c-UL approval), EN55011 Class A and EN61000-3-2, EN61000-3-3, EN61000-6-2, EN60950
 [GP-2501T and GP-2501S] UL60950, UL1604*, CAN/CSA-C22.2 No.60950-00 (c-UL approval), CSA-C22.2 No.213-M1987 (c-UL approval), EN55011 Class A and EN61000-3-2, EN61000-3-3, EN61000-6-2, EN60950, KCC
 [DC] [12.1 inch and 10.4 inch] UL508, UL1604*, CAN/CSA-C22.2 No.1010-1, CSA-C22.2, No.213-M1987 (c-UL Approval)[GP2x01 only], EN55011 Class A and EN61000-6-2
 [GP-2400T] UL508, UL1604*, CAN/CSA-C22.2, Nos.142, and 213-M1987*, EN55011 Class A and EN61000-6-2
 [GP-2401T] UL508, UL1604*, CSA-C22.2, Nos.142, and 213-M1987 (c-UL approval)*, EN55011 Class A and EN61000-6-2
 [GP-2300T/S/L and GP-2301T/S/L] UL1604*, UL60950 (Third Edition), CAN/CSA-C22.2 No.60950-00, No.213-M1987, EN55011 class A, EN61000-6-2, KCC (GP-2300T only)
 [GP2000H SERIES] UL60950 (Third Edition), CAN/CSA-C22.2 No.60950-00, EN55011 class A and EN61000-6-2, KCC
 * Suitable for use in Class I, Division 2, Groups A, B, C, and D Hazardous Locations only.

GLC SERIES

Graphic Logic Controller

Supporting software GP-PRO/PBIII

Advanced HMI and Control in One Box



GLC2300T/L 5.7 inch
 GLC2300-TC41-24V [DC24V]
 GLC2300-LG41-24V [DC24V]
 • TFT Color LCD
 • Monochrome LCD
 • 320 × 240 pixels
 • 256 Colors
 • Black & White, Gray Scale
 • 2MB FEPROM
 I/F Ethernet / CF Card
 FLEX NETWORK I/O Unit / COM
 Expansion COM / Tool Connector / AUX

GLC2400T 7.4 inch
 GLC2400-TC41-24V [DC24V]
 • TFT Color LCD
 • 640 × 480 pixels
 • 256 Colors
 • 4MB FEPROM
 I/F Ethernet / CF Card
 FLEX NETWORK I/O Unit
 Sound / COM / Expansion COM
 Printer / Tool Connector / AUX

GLC2500T 10.4 inch
 GLC2500-TC41-24V [DC24V]
 GLC2500-TC41-200V [AC100-200V]
 • TFT Color LCD
 • 640 × 480 pixels
 • 256 Colors
 • 4MB FEPROM
 I/F Ethernet / CF Card
 FLEX NETWORK I/O Unit / Sound
 COM / Expansion COM / Printer
 Tool Connector / AUX
 VM Unit / Expansion CF Card

GLC2600T 12.1 inch
 GLC2600-TC41-24V [DC24V]
 GLC2600-TC41-200V [AC100-200V]
 • TFT Color LCD
 • 800 × 600 pixels
 • 256 Colors
 • 4MB FEPROM
 I/F Ethernet / CF Card
 FLEX NETWORK I/O Unit / Sound
 COM / Expansion COM / Printer
 Tool Connector / AUX
 VM Unit / Expansion CF Card

International Safety Standards
 [AC] [GLC2500T and GLC2600T] UL60950, UL1604*, CAN/CSA-C22.2, No.60950-00(c-UL approval), CAN/CSA-C22.2, No.213-M1987(c-UL approval)*, EN55011 Class A and EN61000-3-2, EN61000-3-3, EN61000-6-2, EN60950
 [DC] [GLC2300T/L] UL1604* and UL60950(Third Edition), CAN/CSA-C22.2 No.60950-00 and No.213-M1987, EN55022 class A and EN50082-2
 [GLC2400T] UL508, UL1604*, CAN/CSA-C22.2, No.142 and 213-M1987(c-UL approval), EN55011 Class A and EN61000-6-2
 [GLC2500T and GLC2600T] UL508, UL1604*, CAN/CSA-C22.2, No.1010-1(c-UL approval), EN55011 Class A and EN61000-6-2
 * Suitable for use in Class I, Division 2, Groups A, B, C, and D Hazardous Locations only.

LT SERIES

Graphic Logic Controller

Supporting software GP-PRO/PBIII

Low Cost HMI and Control with Built-in I/O



Color LCD Model
 5.7 inch QVGA
 [DC24V]
 • STN Color LCD
 • 1MB FEPROM
 • 320 x 240 pixels
 • 64 Colors



Blue Monochrome LCD Model
 5.7 inch QVGA
 [DC24V]
 • Blue-mode monochrome LCD
 • 1MB FEPROM
 • 320 x 240 pixels
 • Blue and White

Type A1	16-point inputs,16-point outputs(Built-in) Sink Type GLC150-BG41-XY32SK-24V GLC150-SC41-XY32SK-24V(Color)	Type B+	16-point inputs,16-point outputs(Built-in) +FLEX NETWORK I/F GLC150-BG41-XY32KF-24V GLC150-SC41-XY32KF-24V(Color)
Type A2	16-point inputs,16-point outputs(Built-in) Source Type GLC150-BG41-XY32SC-24V	Type B	Built-in FLEX NETWORK I/F GLC150-BG41-FLEX-24V
Type C	Built-in SIO + FLEX NETWORK I/F GLC150-BG41-RSFL-24V	Type D**	Built-in Device Net GLC150-BG41-DNM-24V *Marketed only by Pro-face America, Inc.

International Safety Standards
 UL508, UL1604*2, CAN/CSA-C22.2, No.1010-1, EN55011 Class A and EN61000-6-2, CNS 13438 (ClassA), KCC (GLC150-BG41-XY32SK-24V only)
 *1 Models certified by and being applied for the certification of KCC, please visit our website.
 > http://www.pro-face.com/company_e/proface/kcc_list_e.htm
 *2 Suitable for use in Class I, Division 2, Groups A, B, C, and D Hazardous Locations only.

Screen Editor and Logic Program Development Software

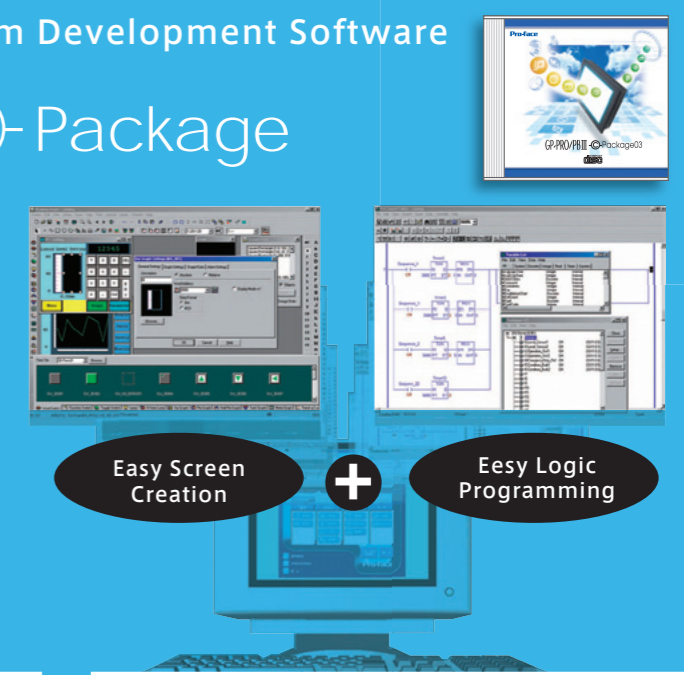
GP-PRO/PBIII Package

GP-PRO-CNT01W-P**

Easy Screen Creation & Logic Program Development

Enjoy the benefits of having screen creation and logic program development in a single, integrated package. Create easy-to-use HMI environments with simple drag & drop mouse operation.

(Software supported by the GP Series(except GP3000 Series), ST Series, GLC Series and LT Series.)



Easy Screen Creation

Easy Logic Programming

Attractive Fonts

Windows font display
 Windows fonts can be displayed as bitmap data on the HMI screen just as you want them.

Integral-multiple fonts
 Now you can enlarge fonts in the usual scaling factors of 1, 2, 4 and 8, and in any magnification rate between 1 and 8. This lets you precisely adjust character size to match your layout.

Beautiful Graphic

Select from 1,200 image parts
 Create screens quickly and easily by simply arranging parts and marks selected from 1,200 available types.

Create and use your own BMP parts
 Create your own image parts or use parts created in the past.

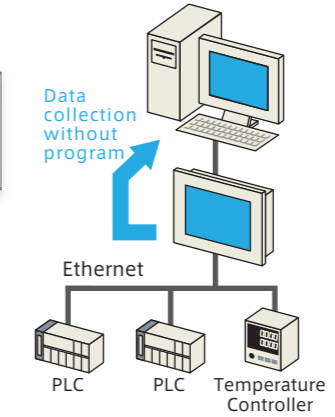
Data Collection Software

Pro-Server

with Pro-Studio
 PSW-ED01-V**

Real-Time Data Collection

It is possible to collect information for the site following simple configuration. Information on Pro-face may be collected on a main computer via Ethernet, and sent from the main computer to the site for production specifications.



Pro-Server Add-on Software

GP-Viewer

PSW-GV01-V**

HMI screen at the production site can be monitored directly on Pro-Server. Use the data playback feature to check previously recorded production data and visually trace the source of hard-to-find problems.



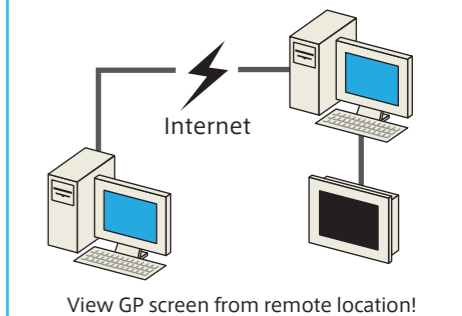
Web Operation Software

GP-Web

GW-CJ01-V**

Remote Monitoring

It is possible to monitor a production site in real-time using the Internet or a cell phone irrelevant of time and place.



View GP screen from remote location!

PS SERIES

Smart Panel Computer



Compact-type design makes it strong enough for a rough production environment.

With Windows® CE
[Type G]

PS-3600G

12.1 inch SVGA Windows CE 5.0

PS3600G-T41 [AC100-240V]

PS3600G-T41-24V [DC24V]

- Windows® CE panel computers
- Intel® XScale® PXA 270 520MHz
- Diskless operation
- PCMCIA support (optional)
- Aluminum die-cast body for superb cooling and dust resistance.

I/O: COM x 2 / USB x 4 (host x 3 / client x 1) / LAN x 1 / CF x 1 / Sound / RAS

International Safety Standards

[AC] [PS-3600G] UL60950-1, CAN/CSA-C22.2 No.60950-1 (c-UL approval)
[PS-2000B] UL60950 (Third Edition), CSA-C22.2 No.950-M95, EN60950, EN55011 (Group 1 ClassA), EN61000-3-2, EN61000-3-3, EN61000-4-2, EN61000-4-3, EN61000-4-4, EN61000-4-5, EN61000-4-6, EN61000-4-8, EN61000-4-11, KCC

[DC] [PS-3600G] UL508, CSA-C22.2 No.14-95(c-UL approval)

High Reliability
Industrial PC's

[Type B]

Last Order Date:
Scheduled for
November 2010

PS-2000B

3 Slots Windows 2000 Windows XP Windows XP Embedded

PS2000B-41 [AC100-240V]

- PC/AT-compatible computer in tower case
- Pentium® III 1GHz or Celeron® 566MHz CPUs
- Dual hard disk drive compatible
- Hard disk drive or CF card bootable

I/O: COM x 4 / USB x 4 / LAN x 2 / PS/2 x 2 / PCI x 3 / RGB / DVI / Sound / RAS

PL SERIES

FA Panel Computer

Rugged and High-Reliability Industrial Panel Computers



Last Order Date:
Scheduled for
November 2010



Last Order Date:
Scheduled for
November 2010

PL-6930T

12.1 inch SVGA 4 Slots Windows 2000 Windows XP Windows XP Embedded

PL6930-T42-PM (Pentium® M 1.6GHz) [AC100-240V]

PL6930-T42-CM (Celeron® M 1.3GHz) [AC100-240V]

PL6930-T41 (Fanless/ Celeron® M 1.3GHz) [AC100-240V]

- PC/AT-compatible panel computers
- Intel® Pentium® M 1.6GHz or Celeron® M 1.3GHz CPUs
- Hard disk drive or CF card bootable

I/O: COM x 4 / USB x 3 / LAN x 2 / PCI/ISA x 2 / PCI x 1 / ISA x 1 / PCMCIA / Sound / RAS

PL-7930T

15 inch XGA 4 Slots Windows 2000 Windows XP Windows XP Embedded

PL7930-T42-PM (Pentium® M 1.6GHz) [AC100-240V]

PL7930-T42-CM (Celeron® M 1.3GHz) [AC100-240V]

PL7930-T41 (Fanless/ Celeron® M 1.3GHz) [AC100-240V]

- PC/AT-compatible panel computers
- Intel® Pentium® M 1.6GHz or Celeron® M 1.3GHz CPUs
- Hard disk drive or CF card bootable

I/O: COM x 4 / USB x 3 / LAN x 2 / PCI/ISA x 2 / PCI x 1 / ISA x 1 / PCMCIA / Sound / RAS

PL-6931T

12.1 inch SVGA 2 Slots Windows 2000 Windows XP Windows XP Embedded

PL6931-T42-PM (Pentium® M 1.6GHz) [AC100-240V]

PL6931-T42-CM (Celeron® M 1.3GHz) [AC100-240V]

PL6931-T41 (Fanless/ Celeron® M 1.3GHz) [AC100-240V]

- PC/AT-compatible panel computers
- Intel® Pentium® M 1.6GHz or Celeron® M 1.3GHz CPUs
- Hard disk drive or CF card bootable

I/O: COM x 4 / USB x 3 / LAN x 2 / PCI/ISA x 1 / ISA x 1 / PCMCIA / Sound / RAS

PL-7931T

15 inch XGA 2 Slots Windows 2000 Windows XP Windows XP Embedded

PL7931-T42-PM (Pentium® M 1.6GHz) [AC100-240V]

PL7931-T42-CM (Celeron® M 1.3GHz) [AC100-240V]

PL7931-T41 (Fanless/ Celeron® M 1.3GHz) [AC100-240V]

- PC/AT-compatible panel computers
- Intel® Pentium® M 1.6GHz or Celeron® M 1.3GHz CPUs
- Hard disk drive or CF card bootable

I/O: COM x 4 / USB x 3 / LAN x 2 / PCI/ISA x 1 / ISA x 1 / PCMCIA / Sound / RAS

International Safety Standards

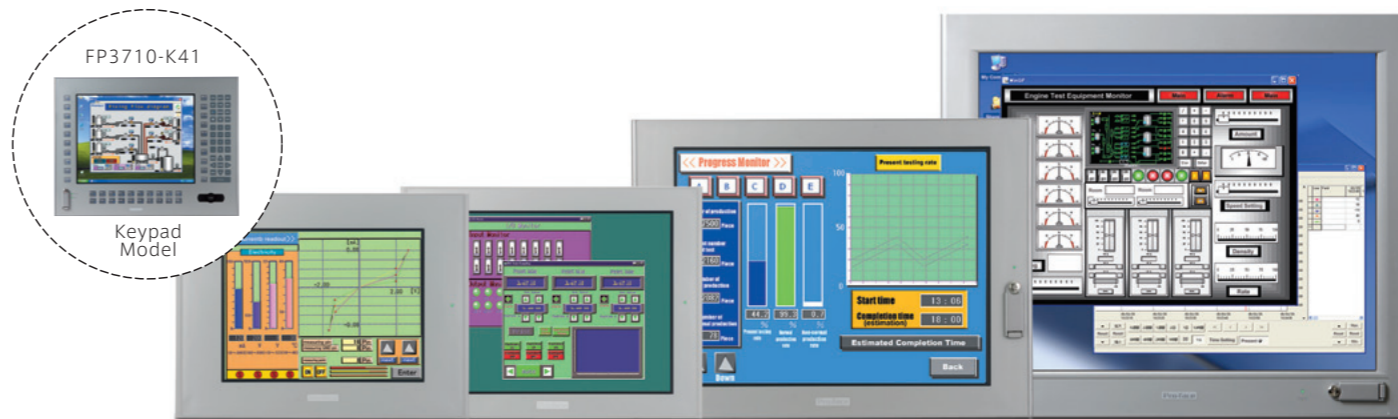
UL508, CSA-C22.2, No. 142-M1987 (c-UL approval), EN55011 Class A, EN61000-3-2, EN61000-3-3, EN61000-6-2 and EN60950-1
** Windows® 2000 refers to Windows® 2000 Professional and Windows® XP refers to Windows® XP Professional.

FP3000 SERIES

Industrial Flat Panel Monitor



Touch Screen Monitors with Standard DVI Compatibility



FP3710-K41



Keypad Model

FP-3500T

10.4 inch VGA

FP3500-T41-24V [DC24V]

FP3500-T11 [AC100-240V]

- Rear USB Interface
- TFT Color LCDs
- Support for displaying analog
- VESA standard for mounting on stand or arm*

I/O: Analog RGB x 1 / DVI x 1 / USB x 1 / COM x 1

* Required an optional cover

FP-3600T/3650T

12.1 inch SVGA / XGA

FP3600-T41-24V [DC24V]

FP3600-T11 [AC100-240V]

FP3650-T41 [AC100-240V]

- Rear USB Interface
- TFT Color LCDs
- Support for displaying analog
- VESA standard for mounting on stand or arm*

I/O: Analog RGB x 1 / DVI x 1 / USB x 1 / COM x 1

* Required an optional cover

FP-3710T/K

15 inch XGA

FP3710-T42-U [AC100-240V]

FP3710-T42 [AC100-240V]

FP3710-K41-U [AC100-240V]

- Front USB Interface (FP3710-T41-U)
- Large and premium quality
- TFT Color LCDs
- Support for displaying analog

I/O: Analog RGB x 1 / DVI x 1 / USB(Front) x 1 / COM x 1

FP-3900T

19 inch SXGA

FP3900-T41-U [AC100-240V]

FP3900-T41 [AC100-240V]

- Front USB Interface (FP3900-T41-U)
- Large and premium quality
- TFT Color LCDs
- Support for displaying analog

I/O: Analog RGB x 1 / DVI x 1 / USB(Front) x 1 / COM x 1

International Safety Standards

[AC] [FP3500-T11 and FP3600-T11] KCC
[FP-3650T] UL60950-1 (First Edition), CSA-C22.2, No.60950-1-03(c-UL Approval), EN55011 Class A, EN61000-6-2, EN60950-1 First Edition
[FP-3710T] UL508, CSA-C22.2, No.142-M1987(c-UL Approval), EN55011 Class A, EN61000-6-2, EN60950-1 First Edition, 47 CFR Part 15 Class A
[FP-3710K] UL508, CSA-C22.2, No.142-M1987 (c-UL Approval), ANSI/ISA-12.12.01-2007*, CSA-C22.2 No.213-M1987 (c-UL Approval)*, EN55011 Class A, EN61000-6-2, EN60950-1 First Edition, 47 CFR Part 15 Class A
[FP-3900T] UL508, CSA-C22.2, No.142-M1987, ANSI/ISA-12.12.01-2007*, CSA-C22.2 No.213-M1987 (c-UL Approval)*, EN55011 Class A, EN61000-6-2, EN60950-1 First Edition, 47 CFR Part 15 Class A

[DC] [FP-3600T] UL508, CSA-C22.2, No.142-M1987, EN55011 Class A, EN61000-6-2
* Suitable for use in Class I, Division 2, Groups A, B, C, and D Hazardous Locations only.

UF SERIES

Industrial Flat Panel Monitor



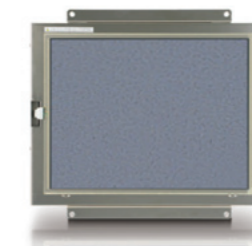
Individual device



UF5511 10.4 inch VGA

UF5511-2-1-DV1-1-5/12V [CE]

- TFT Color LCD



UF7811-2 15 inch XGA

UF7811-2-DV1-24V [CE]

- TFT Color LCD

UF7811-2-DV2M-24V [CE]

UF7811-2-DV2S-24V [CE]

- TFT Color LCD (Exclusively controllable, Multi-connection)

International Safety Standards

[UF5511 and UF7811-2] EN55011 Class A, EN61000-6-2
** Available on special request. Please consult a Pro-face sales representative for details regarding the above monitors.

This is the reason for number one sales in the world.

There is a reason why we continue to get good reviews around the world such as "Digital is the best for programmable display". Not only we do offer hardware with high-performance and advanced technology, but it is also easy to use. Digital cares about users and that is the reason for the 5 features behind the number one brand in the world.

An International Brand
You Can Rely On.

Over 30 Years of
HMI Reliability

Pro-face®

Technological and
Communication
Strength

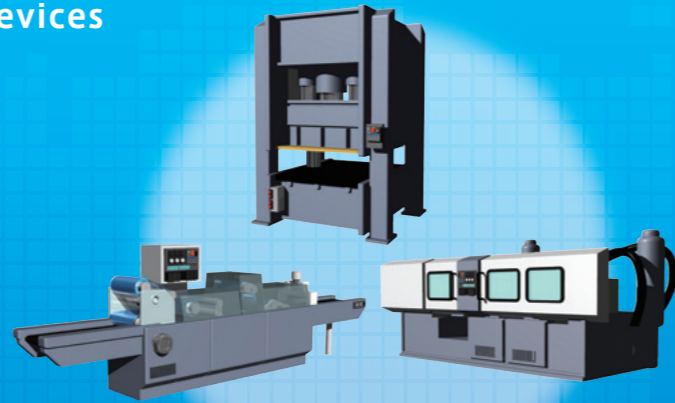
Global Network
Global Support

Pro-face
Special feature

01 Connects to a wide variety of models!

Supports many connection device drivers. Program-less connection to many devices at production site is possible.

Since Digital, a manufacturer specializing in indicators, released programmable displays, we've concentrated our efforts in supporting drivers that connect to diverse devices by various manufacturers. By introducing Pro-face products, "connect simply by connecting" to a PLC or controller, etc., currently being used on site without having to deal with any program. Such convenience is a feature only offered by Digital.



Pro-face
Special feature

02 Easy to use for beginners

Touch-operated software makes it easy for anyone to create a screen without specialized knowledge.

The reason we receive great reviews such as "Digital makes it easy to create screens" is thanks to our screen creation software "GP-Pro EX" developed for easy operation. For example, use the drag and drop function to move parts you choose and create a new screen simply by touch.



Pro-face
Special feature

03 Effective use of property

Compatibility of our first ever software sold in 1989 with new software has been secured, so you can effectively use previously created screens.

One of the reasons people choose "Digital" is that you can continue to use the same screen. Even when replacing display, screens previously created may still be used as such.



Pro-face
Special feature

04 Perfect anywhere in the world.

Compliant with international standards so it can be exported around the world. Expanding worldwide through our sales offices around the world.



Worldwide sales offices
● Pro-face sales offices
● Pro-face branch offices

Compliant with safety standards

Compliance with safety standards makes it possible to integrate with exportation organizations with ease of mind.

Compatible with environmentally friendly RoHS directive

We make products compatible with Restrictions of Hazardous Substances (RoHS) for shipping to the European market. We have been making sequential changes since March 2007 to meet the Chinese RoHS.

For the latest information on our International Sales Offices...

▶ http://www.pro-face.com/company_e/proface/offices.htm

Global support for ease of mind all over the world.

Pro-face provides hospitable support through our support centers around the world.

Telephone and Email support

Web support

Repair

Seminar

Site procurement

Overseas support site ensures ease of mind and responds to countries of export.

"Otasuke Pro!"

Downloads available of necessary documents related to export for export to other countries, as well as data and information such as English manuals.

"Otasuke Pro!" English site... ▶ <http://www.pro-face.com/otasuke/>

FREE
membership



Worldwide Locations



Our Environmental Policy and Compliance with the RoHS Directive

Pro-face has taken significant steps to meet increasingly stringent requirements for environmental preservation and has sought to comply with the RoHS Directive by adopting measures to eliminate specified harmful substances from existing products and products to be manufactured and sold beginning in 2006. For details, please refer to our web site or contact our sales office in your country.



www.proface.com

Worldwide Contacts:
<http://www.proface.com/worldwide/>

Conformance with International Safety Standards

Pro-face products and component parts bearing the CE Mark and the UL or c-UL Listing and Recognized Component Marks are your guarantees of compliance with safety standards accepted in countries and regions worldwide.

Caution: Before operating any of these products, be sure to read all related manuals thoroughly.

- For printing purposes, the colors in this catalog may differ from those of the actual unit.
- LCD screens may exhibit minute grid-points (light and dark) on the Display Panel surface. "Contouring" - where some parts of the screen are brighter than others, producing a wavelike pattern - may occasionally occur. Both are normal for an LCD display and are not defects.
- Actual user screens may differ from the screens shown here.
- All product names used in this catalog are the registered trademarks or trademarks of their respective companies.
- All information contained in this catalog is subject to change without notice.



Pro-face is a registered trademark of Digital Electronics Corporation in Japan, U.S.A., Canada, Europe and other areas and countries.

©2010.5 Digital Electronics Corporation. All Rights Reserved.

Global Head Office

Digital Electronics Corporation
Osaka, JAPAN
Tel: +81 (0)6 6613 3116
Fax: +81 (0)6 6613 5888
<http://www.pro-face.com>
info@pro-face.com

North/South American Head Office

Pro-face America, Inc.
Saline, MI U.S.A.
Tel: +1 734 429 4971
Fax: +1 734 429 1010
<http://www.profaceamerica.com>
sales.info@profaceamerica.com

European Head Office

Pro-face Europe B.V.
Hoofddorp, THE NETHERLANDS
Tel: +31 (0)23 55 44 099
Fax: +31 (0)23 55 44 090
<http://www.proface.com>
info@proface.com

France

Pro-face France S.A.S.
Milly-Mory, FRANCE
Tel: +33 (0)1 60 21 22 91
Fax: +33 (0)1 60 21 22 92
<http://www.proface.fr>
info@proface.fr

Poland

Pro-face Europe B.V.(Warsaw Office)
Warszawa, POLAND
Tel/FAX: +48 (22) 465-66-62
<http://www.proface.pl/>
proface@proface.pl

Switzerland

Pro-face Deutschland GmbH
Regensdorf, SWITZERLAND
Tel: +41 (0)43 343 7272
Fax: +41 (0)43 343 7279
<http://www.pro-face.ch>
info@pro-face.ch

Australia and New Zealand

Pro-face Australia
Melbourne, AUSTRALIA
Tel: +61 (0)3 9550 7395
Fax: +61 (0)3 9550 7390
<http://www.pro-face.com.au> <http://www.pro-face.co.nz>
pfauf@pro-face.com

South-East Asia Pacific

Pro-face South-East Asia Pacific Co.,Ltd.
Bangkok, THAILAND
Tel: +66 (0)2 617 5678
Fax: +66 (0)2 617 5688
<http://www.proface.co.th>
support@proface.co.th

Austria

Pro-face Europe B.V.(Austria Office)
Hagenberg, AUSTRIA
Tel: +43 7236 3343-620
FAX: +43 7236 3343-629
<http://www.pro-face.at>
office@pro-face.at

Germany

Pro-face Deutschland GmbH
Solingen, GERMANY
Tel: +49 (0)212 258 260
Fax: +49 (0)212 258 2640
<http://www.pro-face.de>
sales@pro-face.de

Scandinavia, Baltic Countries

Pro-face Northern Europe ApS
Roskilde, DENMARK
Tel: +45 70 22 01 22
Fax: +45 70 22 01 33
<http://www.pro-face-eu.net/>
info@pro-face.dk

United Kingdom

Pro-face UK Ltd
Coventry, ENGLAND
Tel: +44 (0)2476 511288
Fax: +44 (0)2476 511499
<http://www.profaceuk.com>
info@profaceuk.com

China

Pro-face China International Trading (Shanghai) Co., Ltd.
Shanghai, P. R. CHINA
Tel: +86 (0)21 6361 5175
Fax: +86 (0)21 6361 5176
<http://www.proface.com.cn>
proface@proface.com.cn

South Korea

Pro-face Korea Co., Ltd.
Seoul, SOUTH KOREA
Tel: +82 (0)2 2630 9850
Fax: +82 (0)2 2630 9860
<http://www.proface.co.kr>
support@proface.co.kr

Spain and Portugal

Pro-face España
Cardedeu (Barcelona), SPAIN
Tel: +34 (0)93 846 07 45
Fax: +34 (0)93 845 48 68
<http://www.pro-face.es>
central@pro-face.es

Russia

Pro-Face Northern Europe ApS (Saint-Petersburg office)
Saint-Petersburg, RUSSIA
Tel: +007 (812) 336-47-06
Fax: +007 (812) 336-47-18
<http://www.pro-face.ru>
info@pro-face.ru

Italy

Pro-face Italia S.p.a.
Bovisio Masciago (Milano), ITALY
Tel: +39 0362 59 96 1
Fax: +39 0362 59 96 99
<http://www.proface.it>
info@proface.it

Sweden

Pro-face Sweden AB
Löddeköpinge (Malmö), SWEDEN
Tel: +46 46 540 90 70
Fax: +46 46 71 27 90
<http://www.pro-face-eu.net>
info@pro-face.se

India

Pro-face India
Bangalore, INDIA
Tel: +91 80 3066 7454/7456
Fax: +91 80 3066 7452
sales.proface@proface.co.in

Taiwan

Pro-face Taiwan Co., Ltd.
Taipei, TAIWAN
Tel: +886 (0)2 2657 1121
Fax: +886 (0)2 2657 1021
<http://www.proface.com.tw>
proface@proface.com.tw