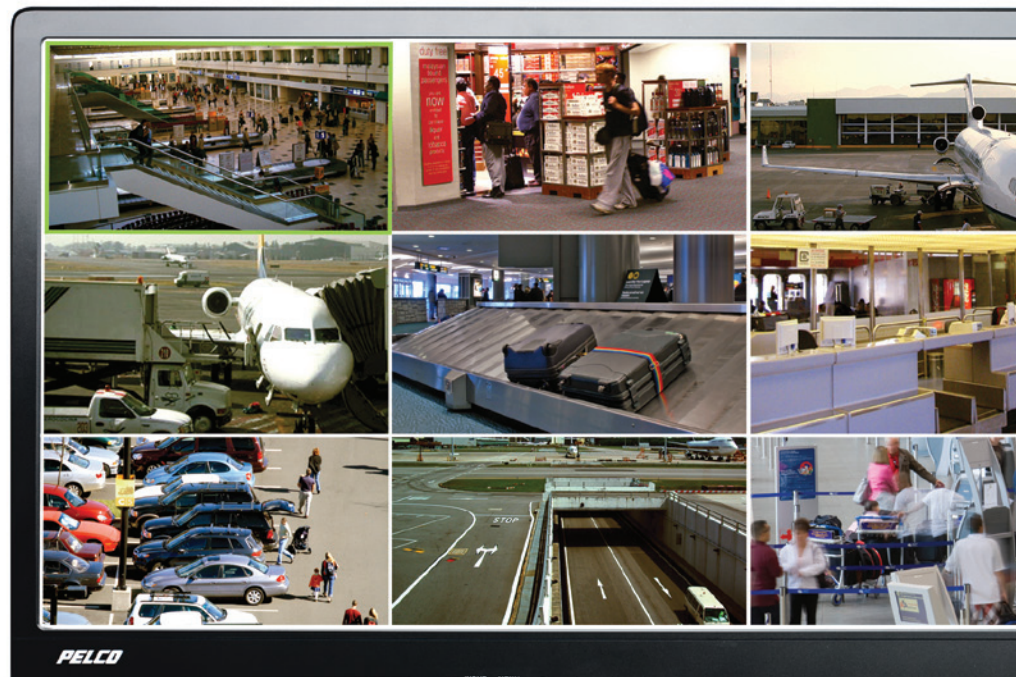


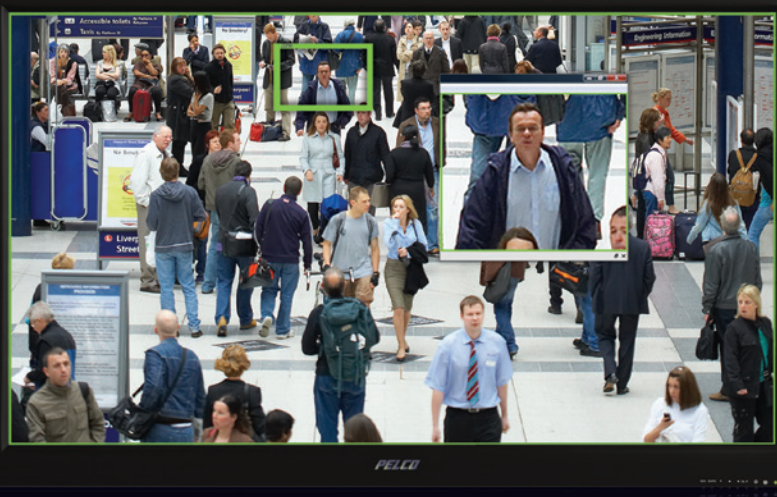


PELCO

by Schneider Electric

▶ Pelco Product Comparison IP Video Solutions





Because customers demand flexibility, all Pelco IP video products are designed with open & integrated solutions in mind.

► For more information, please visit our PartnerFIRST site at www.pelco.com (keyword "partner first")



▶ Table of Contents

As the global leader in the design and development of video and security systems, Pelco produces an unmatched array of IP cameras, HD displays and network video management systems. From end-to-end HD systems to open and integrated solutions, Pelco has an IP video solution to suit your application.

Cameras

Network PTZ Cameras	4
Network Box Cameras	7
Network Indoor Dome Cameras	8
Network Rugged Dome Cameras	9

Viewing Solutions

LCD Monitors	10
--------------	----

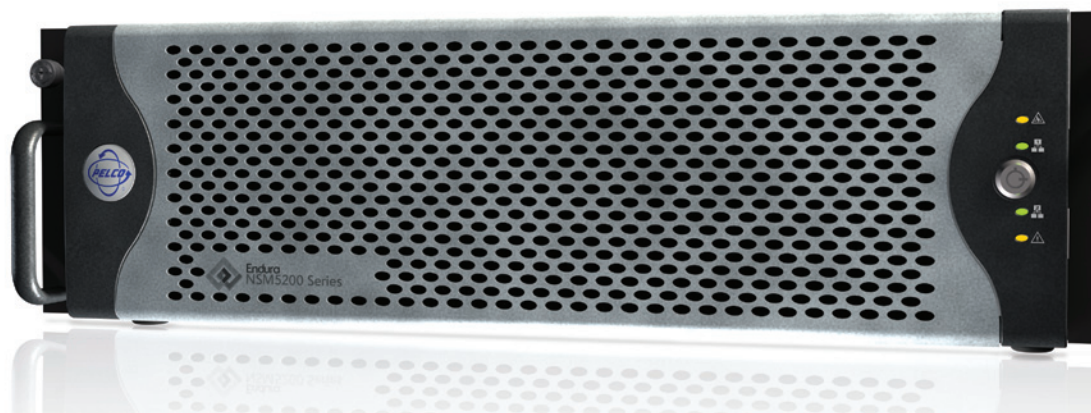
Video Management Solutions

Digital Video Recorders	11
Hybrid Video Recorders	12
Network Video Recording & Management Solutions	14
Network Video Encoders	15
Video Management Software	15

Compatibility Chart

Imaging & Head-End Compatibility Chart	16
--	----

▶ Features and specifications subject to change without notice.
For the most current version of this guide, please visit www.pelco.com



▶ Network PTZ Cameras

For more than a decade, Spectra has set the benchmark for PTZ performance and reliability. Now Pelco brings that same commitment to Network PTZ cameras, from the flagship 35x Spectra IV SE to Spectra Mini IP and the forthcoming Spectra HD.

	Spectra Mini IP	Spectra IV SL	Spectra IV SE	
				
	SD4* 10x Mini-Dome	SD423* 23xSL (Standard or Environmental)	SD427* 27xSE (Standard or Environmental)	SD427-H* 27xSE Heavy Duty†‡
Imager	1/4 Inch Interline CCD	1/4 Inch Exview HAD CCD	1/4 Inch Exview HAD CCD	1/4 Inch Exview HAD CCD
Processors	1	1	1	1
Scanning	2:1 Interlace	2:1 Interlace	Progressive	Interlaced/Progressive
Lens / Zoom	F1.8, 4.2mm - 42mm / 80x Zoom (10x Optical 8x Digital)	F1.6, 3.6 - 82.8mm / 276x Zoom (23x Optical 12x Digital)	F1.4, 3.4 - 98.1mm / 324x Zoom (27x Optical 12x Digital)	F1.4, 3.4 - 98.1mm / 324x Zoom (27x Optical 12x Digital)
Field Of View	5.0° to 46.4°	2.5° to 54°	2.3° to 55.8°	2.3° to 55.8°
Day/Night	No	Yes	Yes	Yes
Resolution	470 TVL	540 TVL	540 TVL	540 TVL
Digital Slow Shutter (DSS)	No	No	Yes	Yes
Sensitivity	3 lux	35 IRE: 0.65 lux at 1/60 sec (color), 0.15 lux at 1/60 sec (B-W)	35 IRE: 0.55 lux at 1/60 sec (color), 0.018 lux at 1/2 sec (color), 0.00018 lux at 1/2 sec (B-W)	35 IRE: 0.55 lux at 1/60 sec (color), 0.018 lux at 1/2 sec (color), 0.00018 lux at 1/2 sec (B-W)
Wide Dynamic Range	No	No	Yes	Yes
Proportional Pan/Tilt	Yes	Yes	Yes	Yes
Pan/Tilt Features	360° continuous pan / 92° tilt range / mechanical auto flip	360° continuous pan / 92° tilt range / mechanical auto flip	360° continuous pan / 92° tilt range / mechanical auto flip	360° continuous pan / 92° tilt range / mechanical auto flip
Presets / Preset Speed / Patterns	64 / 140° per sec / 1	64 / 400° per sec / 1	256 / 400° per sec / 8	256 / 400° per sec / 8
Window Blanking	1 Window Blank	Up to four, four-sided, user-defined shapes.	Up to eight, four-sided, user-defined shapes.	Up to eight, four-sided, user-defined shapes.
Auto-tracking	No	No	No	No
Motion Detection	No	No	No	Yes
Image Stabilization	No	No	No	Yes
Image Enhancement	No	No	No	No
"Sure Focus" Menu Selection	No	No	Yes	Yes
Sodium Light White Balance	No	No	Yes	Yes
Alarm Inputs	1	1	7	7
Relay Outputs	1	1	2	2
Vandal Resistant	No	No	No	Yes
Compression Formats	MPEG-4, M-JPEG	H.264 baseline, MPEG-4, M-JPEG	H.264 baseline, MPEG-4, M-JPEG	H.264 baseline, MPEG-4, M-JPEG
Video Resolutions / Frame Rate	4CIF, CIF / 25 or 30fps at 4CIF maximum, scalable	4CIF, CIF / 25 or 30fps at 4CIF maximum, scalable	4CIF, CIF / 25 or 30fps at 4CIF maximum, scalable	4CIF, CIF / 25 or 30fps at 4CIF maximum, scalable
Audio	bi-directional, full duplex	bi-directional, full duplex	bi-directional, full duplex	bi-directional, full duplex
Audio Compression	G.711 PCM 8 bit, 8kHz mono at 64 kbits/s	G.711 PCM 8 bit, 8kHz mono at 64 kbits/s	G.711 PCM 8 bit, 8kHz mono at 64 kbits/s	G.711 PCM 8 bit, 8kHz mono at 64 kbits/s
Analog Ports	None	BNC	BNC	BNC
USB Expansion Ports	No	No	No	No
Analog Data Formats	None	Coaxitron, RS-422 (P & D)	Coaxitron, RS-422 (P & D)	Coaxitron, RS-422 (P & D)
Analog Output	No	Yes	Yes	Yes
Network Protocols	TCP/IP, UDP/IP (Unicast, multicast IGMP), UPnP, DNS, DHCP, RTP, NTP	TCP/IP, UDP/IP (Unicast, multicast IGMP), UPnP, DNS, DHCP, RTP, NTP, IPv4, SNMP, QoS, HTTP, HTTPS, LDAP (client), SSH, SSL, SMTP, FTP, mDNS (Bonjour), 802.1x (EAP)	TCP/IP, UDP/IP (Unicast, multicast IGMP), UPnP, DNS, DHCP, RTP, NTP, IPv4, SNMP, QoS, HTTP, HTTPS, LDAP (client), SSH, SSL, SMTP, FTP, mDNS (Bonjour), 802.1x (EAP)	TCP/IP, UDP/IP (Unicast, multicast IGMP), UPnP, DNS, DHCP, RTP, NTP, IPv4, SNMP, QoS, HTTP, HTTPS, LDAP (client), SSH, SSL, SMTP, FTP, mDNS (Bonjour), 802.1x (EAP)
Users	5 Simultaneous, unlimited using multicast	20 Simultaneous, unlimited using multicast	20 Simultaneous, unlimited using multicast	20 Simultaneous, unlimited using multicast
POE	IEEE 802.3af class 3	No	No	No
Power	18-30 VAC, 24 VAC nominal; 0.75 A, 50/60 Hz nominal	18-32VAC (24VAC); 22-27VDC (24VDC); 23VA nominal	18-32VAC (24VAC); 22-27VDC (24VDC); 23VA nominal	18-32VAC (24VAC); 22-27VDC (24VDC); 23VA nominal
Certifications	FCC and CE-Class B; UL/cUL Listed; C-Tick, CCC	FCC and CE-Class B; UL/cUL Listed; C-Tick, CCC	FCC and CE-Class B; UL/cUL Listed; C-Tick, CCC	FCC and CE-Class B; UL/cUL Listed; C-Tick, CCC
Warranty	2 Years	3 years	3 years	3 years

*Click on [B.O.S.S.5.0](#) for complete part numbers.

Network PTZ Cameras Continued >>

▶ Network PTZ Cameras

For more than a decade, Spectra has set the benchmark for PTZ performance and reliability. Now Pelco brings that same commitment to Network PTZ cameras, from the flagship 35x Spectra IV SE to Spectra Mini IP and the forthcoming Spectra HD.

Spectra IV SE			
			
	SD427-PSG* 27x SE Stainless Steel†	SD435* 35x SE (Standard or Environmental)	SD435-H* 35x SE Heavy Duty†‡
Imager	1/4 Inch Exview HAD CCD	1/4 Inch Exview HAD CCD	1/4 Inch Exview HAD CCD
Processors	1	1	1
Scanning	Interlaced/Progressive	Interlaced/Progressive	Interlaced/Progressive
Lens / Zoom	F1.4, 3.4-98.1mm / 324x Zoom (27x Optical 12x Digital)	F1.4, 3.4-119mm / 420x Zoom (35x Optical 12x Digital)	F1.4, 3.4-119mm / 420x Zoom (35x Optical 12x Digital)
Field Of View	2.3° to 55.8°	1.7° to 55.8°	1.7° to 55.8°
Day/Night	Yes	Yes	Yes
Resolution	540 TVL	540 TVL	540 TVL
Digital Slow Shutter (DSS)	Yes	Yes	Yes
Sensitivity	35 IRE: 0.55 lux at 1/60 sec (color), 0.018 lux at 1/2 sec (color), 0.00018 lux at 1/2 sec (B-W)	35 IRE: 0.55 lux at 1/60 sec (color), 0.018 lux at 1/2 sec (color), 0.00018 lux at 1/2 sec (B-W)	35 IRE: 0.55 lux at 1/60 sec (color), 0.018 lux at 1/2 sec (color), 0.00018 lux at 1/2 sec (B-W)
Wide Dynamic Range	Yes	Yes	Yes
Proportional Pan/Tilt	Yes	Yes	Yes
Pan/Tilt Features	360° continuous pan / 92° tilt range / mechanical auto flip	360° continuous pan / 92° tilt range / mechanical auto flip	360° continuous pan / 92° tilt range / mechanical auto flip
Presets / Preset Speed / Patterns	256 / 400° per sec / 8	256 / 400° per sec / 8	256 / 400° per sec / 8
Window Blanking	Up to eight, four-sided, user-defined shapes.	Up to eight, four-sided, user-defined shapes.	Up to eight, four-sided, user-defined shapes.
Auto-tracking	No	No	Yes*
Motion Detection	Yes	Yes	Yes
Image Stabilization	Yes	Yes	Yes
Image Enhancement	No	Yes	Yes
"Sure Focus" Menu Selection	Yes	Yes	Yes
Sodium Light White Balance	Yes	Yes	Yes
Alarm Inputs	7	7	7
Relay Outputs	2	2	2
Vandal Resistant	No	No	Yes
Compression Formats	H.264 baseline, MPEG-4, M-JPEG	H.264 baseline, MPEG-4, M-JPEG	H.264 baseline, MPEG-4, M-JPEG
Video Resolutions / Frame Rate	4CIF, CIF / 25 or 30fps at 4CIF maximum, scalable	4CIF, CIF / 25 or 30fps at 4CIF maximum, scalable	4CIF, CIF / 25 or 30fps at 4CIF maximum, scalable
Audio	bi-directional, full duplex	bi-directional, full duplex	bi-directional, full duplex
Audio Compression	G.711 PCM 8 bit, 8kHz mono at 64 kbits/s	G.711 PCM 8 bit, 8kHz mono at 64 kbits/s	G.711 PCM 8 bit, 8kHz mono at 64 kbits/s
Analog Ports	BNC	BNC	BNC
USB Expansion Ports	No	No	No
Analog Data Formats	Coaxitron, RS-422 (P & D)	Coaxitron, RS-422 (P & D)	Coaxitron, RS-422 (P & D)
Analog Output	Yes	Yes	Yes
Network Protocols	TCP/IP, UDP/IP (Unicast, multicast IGMP), UPnP, DNS, DHCP, RTP, NTP, IPv4, SNMP, GoS, HTTP, HT TPs, LDAP (client), SSH, SSL, SMTP, FTP, mDNS (Bonjour), 802.1x (EAP)	TCP/IP, UDP/IP (Unicast, multicast IGMP), UPnP, DNS, DHCP, RTP, NTP, IPv4, SNMP, GoS, HTTP, HT TPs, LDAP (client), SSH, SSL, SMTP, FTP, mDNS (Bonjour), 802.1x (EAP)	TCP/IP, UDP/IP (Unicast, multicast IGMP), UPnP, DNS, DHCP, RTP, NTP, IPv4, SNMP, GoS, HTTP, HT TPs, LDAP (client), SSH, SSL, SMTP, FTP, mDNS (Bonjour), 802.1x (EAP)
Users	20 Simultaneous, unlimited using multicast	20 Simultaneous, unlimited using multicast	20 Simultaneous, unlimited using multicast
POE	No	No	No
Power	18-32VAC (24VAC); 22-27VDC (24VDC); 23VA nominal	18-32VAC (24VAC); 22-27VDC (24VDC); 23VA nominal	18-32VAC (24VAC); 22-27VDC (24VDC); 23VA nominal
Certifications	FCC and CE-Class B; UL/cUL Listed; C-Tick, CCC	FCC and CE-Class B; UL/cUL Listed; C-Tick, CCC	FCC and CE-Class B; UL/cUL Listed; C-Tick, CCC
Warranty	3 years	3 years	3 years

*Click on [B.O.S.S.5.0](#) for complete part numbers.

Network PTZ Cameras Continued >>

▶ Network PTZ Cameras

For more than a decade, Spectra has set the benchmark for PTZ performance and reliability. Now Pelco brings that same commitment to Network PTZ cameras, from the flagship 35x Spectra IV SE to Spectra Mini IP and the forthcoming Spectra HD.

	Spectra IV SE	Spectra HD	
	 SD435-PSG* 35x SE Stainless Steel†	 SD4H35* 35x SE Horizon†	
	 S5118*1.3MP HD (Standard or Environmental)		
Imager	1/4 Inch Exview HAD CCD	1/4 Inch Exview HAD CCD	1/3 Inch CCD
Processors	1	1	2
Scanning	Interlaced/Progressive	Interlaced/Progressive	Progressive
Lens / Zoom	F1.4, 3.4-119mm / 420x Zoom (35x Optical 12x Digital)	F1.4, 3.4-119mm / 420x Zoom (35x Optical 12x Digital)	F1.6, 4.7-84.6mm / 18x Zoom (optical)
Field Of View	1.7° to 55.8°	1.7° to 55.8°	3.2° to 55.2°
Day/Night	Yes	Yes	Yes
Resolution	540 TVL	540 TVL	1280x960
Digital Slow Shutter (DSS)	Yes	Yes	Yes
Sensitivity	35 IRE: 0.55 lux at 1/60 sec (color), 0.018 lux at 1/2 sec (color), 0.00018 lux at 1/2 sec (B-W)	35 IRE: 0.55 lux at 1/60 sec (color), 0.018 lux at 1/2 sec (color), 0.00018 lux at 1/2 sec (B-W)	f/1.6, 2850K, SNR>24dB; Color (33 msec)=1.0 lux; Color (250 msec)= 0.125 lux; Mono (33 msec)= 0.5 lux; Mono (250 msec)=0.125 lux
Wide Dynamic Range	Yes	Yes	Yes, >50 dB with WDR Off, >75dB with WDR On
Proportional Pan/Tilt	Yes	Yes	Yes
Pan/Tilt Features	360° continuous pan / 92° tilt range / mechanical auto flip	360° continuous pan / 110° tilt range / mechanical auto flip	360° continuous pan / 92° tilt range / mechanical auto flip
Presets / Preset Speed / Patterns	256 / 400° per sec / 8	256 / 400° per sec / 8	256 / 400° per sec / 16
Window Blanking	Up to eight, four-sided, user-defined shapes.	Up to eight, four-sided, user-defined shapes.	Up to eight, four-sided, user-defined shapes.
Auto-tracking	Yes*	Yes*	Yes
Motion Detection	Yes	Yes	Yes
Image Stabilization	Yes	Yes	No
Image Enhancement	Yes	Yes	N/A
"Sure Focus" Menu Selection	Yes	Yes	No
Sodium Light White Balance	Yes	Yes	Yes
Alarm Inputs	7	7	accessory coming soon**
Relay Outputs	2	2	accessory coming soon**
Vandal Resistant	No	No	No
Compression Formats	H.264 baseline, MPEG-4, M-JPEG	H.264 baseline, MPEG-4, M-JPEG	H.264 High Profile, M-JPEG
Video Resolutions / Frame Rate	4CIF, CIF / 25 or 30fps at 4CIF maximum, scalable	4CIF, CIF / 25 or 30fps at 4CIF maximum, scalable	SIF, VGA, SVGA, 1280x720, 1280x960, 640x512, 640x352, 480x368, 480x272, 320x256, 320x176 / 25 or 30fps @ 720p, 20fps @ 960p
Audio	bi-directional, full duplex	bi-directional, full duplex	accessory coming soon**
Audio Compression	G.711 PCM 8 bit, 8kHz mono at 64 kbits/s	G.711 PCM 8 bit, 8kHz mono at 64 kbits/s	N/A
Analog Ports	BNC	BNC	None
USB Expansion Ports	No	No	Yes
Analog Data Formats	Coaxitron, RS-422 (P & D)	Coaxitron, RS-422 (P & D)	N/A
Analog Output	Yes	Yes	No
Network Protocols	TCP/IP, UDP/IP (Unicast, multicast IGMP), UPnP, DNS, DHCP, RTP, NTP, IPv4, SNMP, QoS, HTTP, HTTPS, LDAP (client), SSH, SSL, SMTP, FTP, mDNS (Bonjour), 802.1x (EAP)	TCP/IP, UDP/IP (Unicast, multicast IGMP), UPnP, DNS, DHCP, RTP, NTP, IPv4, SNMP, QoS, HTTP, HTTPS, LDAP (client), SSH, SSL, SMTP, FTP, mDNS (Bonjour), 802.1x (EAP)	TCP/IP, UDP/IP (Unicast, multicast IGMP), UPnP, DNS, DHCP, RTP, NTP, IPv4, SNMP, QoS, HTTP, HTTPS, LDAP (client), SSH, SSL, SMTP, FTP, mDNS (Bonjour), 802.1x (EAP)
Users	20 Simultaneous, unlimited using multicast	20 Simultaneous, unlimited using multicast	20 Simultaneous, unlimited using multicast
POE	No	No	IEEE 802.3af class 3
Power	18-32VAC (24VAC); 22-27VDC (24VDC); 23VA nominal	18-32VAC (24VAC); 22-27VDC (24VDC); 23VA nominal	18-32VAC (24VAC); 22-27VDC (24VDC); 23VA nominal
Certifications	FCC and CE-Class B; UL/cUL Listed; C-Tick, CCC	FCC and CE-Class B; UL/cUL Listed; C-Tick, CCC	FCC and CE-Class B; UL/cUL Listed; C-Tick, CCC
Warranty	3 years	3 years	3 years

*Click on [B.O.S.S.5.0](#) for complete part numbers.

▶ Network Box Cameras

Sarix is a groundbreaking technology platform built upon the three pillars of innovative imaging science, sophisticated industrial design and advanced processing power. Available across a complete family of fixed box and dome cameras, Sarix technology maximizes the benefits of megapixel performance with industry-leading features and capabilities.

Sarix IX Series



IX50C



IX50DN



IX10C



IX10DN



IXE10C

	IX50C	IX50DN	IX10C	IX10DN	IXE10C
Resolution	800x600	800x600	1280x1024	1280x1024	1280x1024
Image Sensor	1/3" CMOS	1/3" CMOS	1/3" CMOS	1/3" CMOS	1/3" CMOS
Lens	CS Mount	CS Mount	CS Mount	CS Mount	CS Mount
Focus	Auto Back Focus	Auto Back Focus	Auto Back Focus	Auto Back Focus	Auto Back Focus
Day/Night	No	Yes	No	Yes	No
Illumination	0.12 lux @f1.2	0.03 lux @f1.2	0.12 lux @f1.2	0.03 lux @f1.2	0.12 lux @f1.2
Video Compression	H.264, MPEG4, MJPEG	H.264, MPEG4, MJPEG	H.264, MJPEG	H.264, MJPEG	H.264, MJPEG
Max IPS at Max Resolution	25IPS, 30ips	25IPS, 30ips	8ips, 20ips	8ips, 20ips	30ips @ 720P
Audio	Accessory IA-A	Accessory IA-A	Accessory IA-A	Accessory IA-A	Accessory IA-A
Alarm In/Out	1In/Out	1In/Out	1In/Out	1In/Out	1In/Out
Analytics	Camera Sabatoge	Camera Sabatoge	Camera Sabatoge	Camera Sabatoge	Camera Sabatoge
Network Protocols	TCP/IP, UDP/IP (Unicast, Multicast IGMP), UPnP, DNS, DHCP, RTP, RTSP, NTP, IPv4, SNMP, QoS, HTTP, HTTPS, LDAP (client), SSH, SSL, SMTP, FTP, MDNS (Bonjour)	TCP/IP, UDP/IP (Unicast, Multicast IGMP), UPnP, DNS, DHCP, RTP, RTSP, NTP, IPv4, SNMP, QoS, HTTP, HTTPS, LDAP (client), SSH, SSL, SMTP, FTP, MDNS (Bonjour)	TCP/IP, UDP/IP (Unicast, Multicast IGMP), UPnP, DNS, DHCP, RTP, RTSP, NTP, IPv4, SNMP, QoS, HTTP, HTTPS, LDAP (client), SSH, SSL, SMTP, FTP, MDNS (Bonjour)	TCP/IP, UDP/IP (Unicast, Multicast IGMP), UPnP, DNS, DHCP, RTP, RTSP, NTP, IPv4, SNMP, QoS, HTTP, HTTPS, LDAP (client), SSH, SSL, SMTP, FTP, MDNS (Bonjour)	TCP/IP, UDP/IP (Unicast, Multicast IGMP), UPnP, DNS, DHCP, RTP, RTSP, NTP, IPv4, SNMP, QoS, HTTP, HTTPS, LDAP (client), SSH, SSL, SMTP, FTP, MDNS (Bonjour)
Power	24VAC	24VAC	24VAC	24VAC	24VAC
PoE	Yes	Yes	Yes	Yes	Yes
Video Service Jack	Yes	Yes	Yes	Yes	Yes
Pelco System Compatibility	Endura v1.5 (or later); Digital Sentry v4.2 (or later); DX8100 v2.0 (or later); and DVR5100 v1.54 (or later)	Endura v1.5 (or later); Digital Sentry v4.2 (or later); DX8100 v2.0 (or later); and DVR5100 v1.54 (or later)	Endura 2.0 (or later) or Digital Sentry 4.3 (or later)	Endura 2.0 (or later) or Digital Sentry 4.3 (or later)	Endura 2.0 (or later) or Digital Sentry 4.3 (or later)

Sarix IX Series



IXE10DN



IXE20C



IXE20DN



IX30C








IX30DN

	IXE10DN	IXE20C	IXE20DN	IX30C	IX30DN
Resolution	1280x1024	1920x1080	1920x1080	2048x1536	2048x1536
Image Sensor	1/3" CMOS	1/3" CMOS	1/3" CMOS	1/3" CMOS	1/3" CMOS
Lens	CS Mount	CS Mount	CS Mount	CS Mount	CS Mount
Focus	Auto Back Focus	Auto Back Focus	Auto Back Focus	Auto Back Focus	Auto Back Focus
Day/Night	Yes	No	Yes	No	Yes
Illumination	0.03 lux @f1.2	0.12 lux @f1.2	0.03 lux @f1.2	0.12 lux @f1.2	0.03 lux @f1.2
Video Compression	H.264, MJPEG	H.264, MJPEG	H.264, MJPEG	H.264, MJPEG	H.264, MJPEG
Max IPS at Max Resolution	30ips @ 720P	30ips	30ips	3ips, 12ips	3ips, 12ips
Audio	Accessory IA-A	Accessory IA-A	Accessory IA-A	Accessory IA-A	Accessory IA-A
Alarm In/Out	1In/Out	1In/Out	1In/Out	1In/Out	1In/Out
Analytics	Camera Sabatoge	Pelco & OV Analytics	Pelco & OV Analytics	Camera Sabatoge	Camera Sabatoge
Network Protocols	TCP/IP, UDP/IP (Unicast, Multicast IGMP), UPnP, DNS, DHCP, RTP, RTSP, NTP, IPv4, SNMP, QoS, HTTP, HTTPS, LDAP (client), SSH, SSL, SMTP, FTP, MDNS (Bonjour)	TCP/IP, UDP/IP (Unicast, Multicast IGMP), UPnP, DNS, DHCP, RTP, RTSP, NTP, IPv4, SNMP, QoS, HTTP, HTTPS, LDAP (client), SSH, SSL, SMTP, FTP, MDNS (Bonjour)	TCP/IP, UDP/IP (Unicast, Multicast IGMP), UPnP, DNS, DHCP, RTP, RTSP, NTP, IPv4, SNMP, QoS, HTTP, HTTPS, LDAP (client), SSH, SSL, SMTP, FTP, MDNS (Bonjour)	TCP/IP, UDP/IP (Unicast, Multicast IGMP), UPnP, DNS, DHCP, RTP, RTSP, NTP, IPv4, SNMP, QoS, HTTP, HTTPS, LDAP (client), SSH, SSL, SMTP, FTP, MDNS (Bonjour)	TCP/IP, UDP/IP (Unicast, Multicast IGMP), UPnP, DNS, DHCP, RTP, RTSP, NTP, IPv4, SNMP, QoS, HTTP, HTTPS, LDAP (client), SSH, SSL, SMTP, FTP, MDNS (Bonjour)
Power	24VAC	24VAC	24VAC	24VAC	24VAC
PoE	Yes	Yes	Yes	Yes	Yes
Video Service Jack	Yes	Yes	Yes	Yes	Yes
Pelco System Compatibility	Endura 2.0 (or later) or Digital Sentry 4.3 (or later)	Endura 2.0 (or later) or Digital Sentry 4.3 (or later)	Endura 2.0 (or later) or Digital Sentry 4.3 (or later)	Endura 2.0 (or later) or Digital Sentry 4.3 (or later)	Endura 2.0 (or later) or Digital Sentry 4.3 (or later)

▶ Network Indoor Dome Cameras

The Sarix ID Series sets a new standard for features and performance in a network dome camera, remarkably easy one-handed installation and innovative Auto Back Focus. Compact, powerful and surprisingly affordable, the IM Series packs the most popular features and functionality of Sarix technology into a discrete and value driven indoor dome enclosure.

	Sarix IM Series			Sarix ID Series	
					
	IMSOC10-1	IM10C10-1	IM10C10-B1	IDSOC12-1	IDSODN12-1
Resolution	800x600	1280x1024	1280x1024	800x600	800x600
Image Sensor	1/3" CMOS	1/3" CMOS	1/3" CMOS	1/3" CMOS	1/3" CMOS
Lens	Integrated 2.8-10mm	Integrated 2.8-10mm	Integrated 2.8-10mm	CS Mount 2.8-12mm	CS Mount 2.8-12mm
Focus	Manual	Auto Focus	Auto Focus	Auto Back Focus	Auto Back Focus
Day/Night	No	No	No	No	Yes
Illumination	0.12 lux @f1.2	0.12 lux @f1.2	0.12 lux @f1.2	0.12 lux @f1.2	0.12 lux @f1.2
Video Compression	H.264, MPEG4, MJPEG	H.264, MJPEG	H.264, MJPEG	H.264, MPEG4, MJPEG	H.264, MPEG4, MJPEG
Max IPS at Max Resolution	25IPS, 30ips	20IPS, 8ips	20IPS, 8ips	25IPS, 30ips	25IPS, 30ips
Audio	Accessory IA-A	Accessory IA-A	Accessory IA-A	Accessory IA-A	Accessory IA-A
Alarm In/Out	1In/Out	1In/Out	1In/Out	1In/Out	1In/Out
Analytics	Camera Sabotage	Camera Sabotage	Camera Sabotage	Camera Sabotage	Camera Sabotage
Network Protocols	TCP/IP, UDP/IP (Unicast, Multicast IGMP), UPnP, DNS, DHCP, RTP, RTSP, NTP, IPv4, SNMP, QoS, HTTP, HTTPS, LDAP (client), SSH, SSL, SMTP, FTP, MDNS (Bonjour)	TCP/IP, UDP/IP (Unicast, Multicast IGMP), UPnP, DNS, DHCP, RTP, RTSP, NTP, IPv4, SNMP, QoS, HTTP, HTTPS, LDAP (client), SSH, SSL, SMTP, FTP, MDNS (Bonjour)	TCP/IP, UDP/IP (Unicast, Multicast IGMP), UPnP, DNS, DHCP, RTP, RTSP, NTP, IPv4, SNMP, QoS, HTTP, HTTPS, LDAP (client), SSH, SSL, SMTP, FTP, MDNS (Bonjour)	TCP/IP, UDP/IP (Unicast, Multicast IGMP), UPnP, DNS, DHCP, RTP, RTSP, NTP, IPv4, SNMP, QoS, HTTP, HTTPS, LDAP (client), SSH, SSL, SMTP, FTP, MDNS (Bonjour)	TCP/IP, UDP/IP (Unicast, Multicast IGMP), UPnP, DNS, DHCP, RTP, RTSP, NTP, IPv4, SNMP, QoS, HTTP, HTTPS, LDAP (client), SSH, SSL, SMTP, FTP, MDNS (Bonjour)
Power	24VAC	24VAC	24VAC	24VAC	24VAC
PoE	Yes	Yes	Yes	Yes	Yes
Video Service Jack	Yes	Yes	Yes	Yes	Yes
Pelco System Compatibility	Endura v1.5 (or later); Digital Sentry v4.2 (or later); DX8100 v2.0 (or later); and DVR5100 v1.54 (or later)	Endura 2.0 (or later) or Digital Sentry 4.3 (or later)	Endura 2.0 (or later) or Digital Sentry 4.3 (or later)	Endura v1.5 (or later); Digital Sentry v4.2 (or later); DX8100 v2.0 (or later); and DVR5100 v1.54 (or later)	Endura v1.5 (or later); Digital Sentry v4.2 (or later); DX8100 v2.0 (or later); and DVR5100 v1.54 (or later)

	Sarix ID Series				
					
	ID10CB-1	ID10DN8-1	ID10DN8-1	ID20DN8-1	ID30DN8-1
Resolution	1280x1024	1280x1024	1280x1024	1920x1080	2048x1536
Image Sensor	1/3" CMOS	1/3" CMOS	1/3" CMOS	1/3" CMOS	1/3" CMOS
Lens	CS Mount 2.8-8mm Lens	CS Mount 2.8-8mm	CS Mount 2.8-8mm	CS Mount 2.8-8mm	CS Mount 2.8-8mm
Focus	Auto Back Focus	Auto Back Focus	Auto Back Focus	Auto Back Focus	Auto Back Focus
Day/Night	No	Yes	Yes	Yes	Yes
Illumination	0.12 lux @f1.2	0.12 lux @f1.2	0.03 lux @f1.2	0.03 lux @f1.2	0.03 lux @f1.2
Video Compression	H.264, MJPEG	H.264, MJPEG	H.264, MJPEG	H.264, MJPEG	H.264, MJPEG
Max IPS at Max Resolution	20IPS, 8ips	20IPS, 8ips	30ips @ 720P	30ips	10IPS, 3ips
Audio	Accessory IA-A	Accessory IA-A	Accessory IA-A	Accessory IA-A	Accessory IA-A
Alarm In/Out	1In/Out	1In/Out	1In/Out	1In/Out	1In/Out
Analytics	Camera Sabotage	Camera Sabotage	Pelco & OV Analytics	Pelco & OV Analytics	Camera Sabotage
Network Protocols	TCP/IP, UDP/IP (Unicast, Multicast IGMP), UPnP, DNS, DHCP, RTP, RTSP, NTP, IPv4, SNMP, QoS, HTTP, HTTPS, LDAP (client), SSH, SSL, SMTP, FTP, MDNS (Bonjour)	TCP/IP, UDP/IP (Unicast, Multicast IGMP), UPnP, DNS, DHCP, RTP, RTSP, NTP, IPv4, SNMP, QoS, HTTP, HTTPS, LDAP (client), SSH, SSL, SMTP, FTP, MDNS (Bonjour)	TCP/IP, UDP/IP (Unicast, Multicast IGMP), UPnP, DNS, DHCP, RTP, RTSP, NTP, IPv4, SNMP, QoS, HTTP, HTTPS, LDAP (client), SSH, SSL, SMTP, FTP, MDNS (Bonjour)	TCP/IP, UDP/IP (Unicast, Multicast IGMP), UPnP, DNS, DHCP, RTP, RTSP, NTP, IPv4, SNMP, QoS, HTTP, HTTPS, LDAP (client), SSH, SSL, SMTP, FTP, MDNS (Bonjour)	TCP/IP, UDP/IP (Unicast, Multicast IGMP), UPnP, DNS, DHCP, RTP, RTSP, NTP, IPv4, SNMP, QoS, HTTP, HTTPS, LDAP (client), SSH, SSL, SMTP, FTP, MDNS (Bonjour)
Power	24VAC	24VAC	24VAC	24VAC	24VAC
PoE	Yes	Yes	Yes	Yes	Yes
Video Service Jack	Yes	Yes	Yes	Yes	Yes
Pelco System Compatibility	Endura 2.0 (or later) or Digital Sentry 4.3 (or later)	Endura 2.0 (or later) or Digital Sentry 4.3 (or later)	Endura 2.0 (or later) or Digital Sentry 4.3 (or later)	Endura 2.0 (or later) or Digital Sentry 4.3 (or later)	Endura 2.0 (or later) or Digital Sentry 4.3 (or later)

▶ Network Rugged Dome Cameras

The vandal resistant Sarix IE Series Outdoor Network Fixed Dome Camera is the industry's most innovative, easy-to-install, and high-performance all-weather IP-based imaging solution. Camclosure IP adds value to existing IT and security investments, with an open architecture that makes it easy to control via standard web browser, an Endura system, or third-party software.

Camclosure IP110 Series Sarix IE Series

	IP110-CHV9	IP110-CWV9	IP110-DNV9	IP110-DWV9	IESOC12-1	IESODN12-1
Resolution	768 x 494 (NTSC), 752 x 582 (PAL)	768 x 494 (NTSC), 752 x 582 (PAL)	768 x 494 (NTSC), 752 x 582 (PAL)	768 x 494 (NTSC), 752 x 582 (PAL)	800x600	800x600
Image Sensor	1/3" CCD	1/3" CMOS	1/3" CCD	1/3" CMOS	1/3" CMOS	1/3" CMOS
Lens	Integrated 3 - 9.5mm	Integrated 3 - 9.5mm	Integrated 3 - 9.5mm	Integrated 3 - 9.5mm	CS Mount 2.8-12mm	CS Mount 2.8-12mm
Focus	Manual	Manual	Manual	Manual	Auto Back Focus	Auto Back Focus
Day/Night	No	No	Yes	Yes	No	Yes
Illumination	0.3 lux	0.2 lux	0.015 lux	0.02 lux	0.12 lux @ f1.2	0.12 lux @ f1.2
Video Compression	MPEG4, MJPEG	MPEG4, MJPEG	MPEG4, MJPEG	MPEG4, MJPEG	H.264, MPEG4, MJPEG	H.264, MPEG4, MJPEG
Max IPS at Max Resolution	30ips, 15ips	30ips, 15ips	30ips, 15ips	30ips, 15ips	25IPS, 30ips	25IPS, 30ips
Audio					Accessory IA-A	Accessory IA-A
Alarm In/Out	1In/Out	1In/Out	1In/Out	1In/Out	1In/Out	1In/Out
Analytics					Camera Sabatoge	Camera Sabatoge
Network Protocols	TCP/IP, UDP/IP (Unicast, Multicast IGMP), UPnP, DNS, DHCP, RTP, NTP	TCP/IP, UDP/IP (Unicast, Multicast IGMP), UPnP, DNS, DHCP, RTP, NTP	TCP/IP, UDP/IP (Unicast, Multicast IGMP), UPnP, DNS, DHCP, RTP, NTP	TCP/IP, UDP/IP (Unicast, Multicast IGMP), UPnP, DNS, DHCP, RTP, NTP	TCP/IP, UDP/IP (Unicast, Multicast IGMP), UPnP, DNS, DHCP, RTP, RTSP, NTP, IPv4, SNMP, QoS, HTTP, HTTPS, LDAP (client), SSH, SSL, SMT, FTP, MDNS (Bonjour)	TCP/IP, UDP/IP (Unicast, Multicast IGMP), UPnP, DNS, DHCP, RTP, RTSP, NTP, IPv4, SNMP, QoS, HTTP, HTTPS, LDAP (client), SSH, SSL, SMT, FTP, MDNS (Bonjour)
Power	24VAC	24VAC	24VAC	24VAC	24VAC	24VAC
PoE	Yes	Yes	Yes	Yes	Yes	Yes
Video Service Jack	Yes	Yes	Yes	Yes	Yes	Yes
Outdoor Rated	Yes	Yes	Yes	Yes	Yes	Yes
Pelco System Compatibility	Endura v1.5 (or later); Digital Sentry v4.2 (or later); DX8100 v2.0 (or later); and DVR5100 v1.54 (or later)	Endura v1.5 (or later); Digital Sentry v4.2 (or later); DX8100 v2.0 (or later); and DVR5100 v1.54 (or later)	Endura v1.5 (or later); Digital Sentry v4.2 (or later); DX8100 v2.0 (or later); and DVR5100 v1.54 (or later)	Endura v1.5 (or later); Digital Sentry v4.2 (or later); DX8100 v2.0 (or later); and DVR5100 v1.54 (or later)	Endura v1.5 (or later); Digital Sentry v4.2 (or later); DX8100 v2.0 (or later); and DVR5100 v1.54 (or later)	Endura v1.5 (or later); Digital Sentry v4.2 (or later); DX8100 v2.0 (or later); and DVR5100 v1.54 (or later)

Sarix IE Series

	IE10C8-1	IE10DN8-1	IEE10DN8-1	IEE20DN8-1	IE30DN8-1
Resolution	1280x1024	1280x1024	1280x1024	1920x1080	2048x1536
Image Sensor	1/3" CMOS	1/3" CMOS	1/3" CMOS	1/3" CMOS	1/3" CMOS
Lens	CS Mount 2.8-8mm Lens	CS Mount 2.8-8mm	CS Mount 2.8-8mm	CS Mount 2.8-8mm	CS Mount 2.8-8mm
Focus	Auto Back Focus	Auto Back Focus	Auto Back Focus	Auto Back Focus	Auto Back Focus
Day/Night	No	Yes	Yes	Yes	Yes
Illumination	0.12 lux @ f1.2	0.12 lux @ f1.2	0.03 lux @ f1.2	0.03 lux @ f1.2	0.03 lux @ f1.2
Video Compression	H.264, MJPEG	H.264, MJPEG	H.264, MJPEG	H.264, MJPEG	H.264, MJPEG
Max IPS at Max Resolution	20IPS, 8ips	20IPS, 8ips	30ips @ 720P	30ips	10IPS, 3ips
Audio	Accessory IA-A	Accessory IA-A	Accessory IA-A	Accessory IA-A	Accessory IA-A
Alarm In/Out	1In/Out	1In/Out	1In/Out	1In/Out	1In/Out
Analytics	Camera Sabatoge	Camera Sabatoge	Pelco & OV Analytic Suites	Pelco & OV Analytic Suites	Camera Sabatoge
Network Protocols	TCP/IP, UDP/IP (Unicast, Multicast IGMP), UPnP, DNS, DHCP, RTP, RTSP, NTP, IPv4, SNMP, QoS, HTTP, HTTPS, LDAP (client), SSH, SSL, SMT, FTP, MDNS (Bonjour)	TCP/IP, UDP/IP (Unicast, Multicast IGMP), UPnP, DNS, DHCP, RTP, RTSP, NTP, IPv4, SNMP, QoS, HTTP, HTTPS, LDAP (client), SSH, SSL, SMT, FTP, MDNS (Bonjour)	TCP/IP, UDP/IP (Unicast, Multicast IGMP), UPnP, DNS, DHCP, RTP, RTSP, NTP, IPv4, SNMP, QoS, HTTP, HTTPS, LDAP (client), SSH, SSL, SMT, FTP, MDNS (Bonjour)	TCP/IP, UDP/IP (Unicast, Multicast IGMP), UPnP, DNS, DHCP, RTP, RTSP, NTP, IPv4, SNMP, QoS, HTTP, HTTPS, LDAP (client), SSH, SSL, SMT, FTP, MDNS (Bonjour)	TCP/IP, UDP/IP (Unicast, Multicast IGMP), UPnP, DNS, DHCP, RTP, RTSP, NTP, IPv4, SNMP, QoS, HTTP, HTTPS, LDAP (client), SSH, SSL, SMT, FTP, MDNS (Bonjour)
Power	24VAC	24VAC	24VAC	24VAC	24VAC
PoE	Yes	Yes	Yes	Yes	Yes
Video Service Jack	Yes	Yes	Yes	Yes	Yes
Outdoor Rated	Yes	Yes	Yes	Yes	Yes
Pelco System Compatibility	Endura 2.0 (or later) or Digital Sentry 4.3 (or later)	Endura 2.0 (or later) or Digital Sentry 4.3 (or later)	Endura 2.0 (or later) or Digital Sentry 4.3 (or later)	Endura 2.0 (or later) or Digital Sentry 4.3 (or later)	Endura 2.0 (or later) or Digital Sentry 4.3 (or later)

LCD Monitors

Pelco offers a complete array of viewing solutions designed for the stringent demands of the video security professional. Whatever your space, budget, style or technology needs, Pelco has the viewing solution for your application, designed to deliver the exceptional performance you expect from the industry leader.



200 Series Desktop		300 Series Desktop		300 Series Widescreen Desktop	
GENERAL					
Native Resolution	1280 x 1024	1280 x 1024		1440 x 900	
Brightness	300 nit	300 nit		300 nit	
Contrast Ratio	1000:1	1000:1		1000:1	
Response Time	5 ms	5 ms		5 ms	
Panel Life	50K Hours	50K Hours		50K Hours	
Viewing Angle	160/160	160/160		160/160	
Aspect Ratio	5:4	5:4		16:10	
ELECTRICAL					
Power Consumption	<50W	<50W		<50W	
Input Voltage	100 to 240 VAC, 50/60 Hz	100 to 240 VAC, 50/60 Hz		100 to 240 VAC, 50/60 Hz	
Video Input	1 RGB; 1 DVI	1 BNC, looping; 1S-Video, looping; 1 RGB; 1 DVI		1 BNC, looping; 1S-Video, looping; 1 RGB; 1 DVI	
ENVIRONMENTAL					
Operating Temperature	0 - 40C	0 - 40C		0 - 40C	
Operating Humidity	20% - 80% Non Condensing	20% - 80% Non Condensing		20% - 80% Non Condensing	
PHYSICAL					
Unit Weight	12.6 lbs	10.8 lbs (17"), 12.6 lbs (19")		11.9 lbs	
Shipping Weight	18 lbs	16 lbs (17"), 18 lbs (19")		17 lbs	
RECOMMENDED MOUNTS					
Wall Mount	PMCL-WM, PMCL-WMT, PMCL-WM1A,	PMCL-WM, PMCL-WMT, PMCL-WM1A,		PMCL-WM, PMCL-WMT, PMCL-WM1A,	
Ceiling Mount	PMCL-CM, PMCL-CMP	PMCL-CM, PMCL-CMP		PMCL-CM, PMCL-CMP	
Rack Mount	PMCL-19ARM	PMCL-17ARM, PMCL-19ARM		PMCL-19WRM	
Certifications	CE, Class B, FCC, Class B, UL/cUL Listed, C-Tick, S-Mark, CCC	CE, Class B, FCC, Class B, UL/cUL Listed, C-Tick, S-Mark, CCC		CE, Class B, FCC, Class B, UL/cUL Listed, C-Tick, S-Mark, CCC	
Warranty	3 Years	3 Years		3 Years	



400 Series Desktop		500 Series Desktop		500 Series Large Format	
GENERAL					
Native Resolution	1280 x 1024	1920 x 1080		1920 x 1080	
Brightness	450 nit	250 nit (24") and 450 nit (32")		500 nit	
Contrast Ratio	1000:4	1000:1 (24") and 5000:1 (32")		5000:1 (42"), 1300:1 (47"), 4000:1 (52")	
Response Time	5 ms	5 ms (24") and 8 ms (32")		6.5 ms (42"), 5 ms (47"), 8 ms (52")	
Panel Life	50K Hours	50K Hours		50K Hours	
Viewing Angle	160/160	160/160 (24") and 178/178 (32")		178/178	
Aspect Ratio	5:4	16:9		16:9	
ELECTRICAL					
Power Consumption	<50W	<33W (24"), <100W (32")		<250W (42"), <350W (47"), <380W (52")	
Input Voltage	100 to 240 VAC, 50/60 Hz	100 to 240 VAC, 50/60 Hz		100 to 240 VAC, 50/60 Hz	
Video Input	2 BNC, looping; 1S-Video, looping; 1 RGB; 1 DVI	1 BNC, looping; 1S-Video, looping; 1 RGB; 1 DVI; 1 HDMI		2 BNC, looping; 1S-Video, looping; 1 RGB; 1 DVI; 1 Component	
ENVIRONMENTAL					
Operating Temperature	0 - 40C	0 - 40C		0 - 40C	
Operating Humidity	20% - 80% Non Condensing	20% - 80% Non Condensing		20% - 80% Non Condensing	
PHYSICAL					
Unit Weight	10.8 lbs (17"), 12.6 lbs (19")	18.7 lbs. (24"), 37.5 lbs. (32")		66.1 lbs (42"), 77.2 lbs (47"), 90.4 lbs (52")	
Shipping Weight	16 lbs (17") 18 lbs (19")	26 lbs (24"), 45 lbs (32")		78 lbs (42"), 91 lbs (47") 104 lbs (52")	
RECOMMENDED MOUNTS					
Wall Mount	PMCL-WM, PMCL-WMT, PMCL-WM1A,	PMCL-WM, PMCL-WMT, PMCL-WM1A		PMCL-WMTF (Tilt), PMCL-WMF (Fixed)	
Ceiling Mount	PMCL-CM, PMCL-CMP	PMCL-CM, PMCL-CMP		PMCL-CM, PMCL-CMP	
Rack Mount	PMCL-17ARM, PMCL-19ARM	NA		NA	
Certifications	CE, Class B, FCC, Class B, UL/cUL Listed, C-Tick, S-Mark, CCC	CE, Class B, FCC, Class B, UL/cUL Listed, C-Tick, S-Mark, CCC, GOST-R, NOM, Energy Star Level 5 Compliant		CE, Class A, FCC, Class A, UL/cUL Listed, C-Tick, CCC	
Warranty	3 Years	3 Years		3 Years	

Digital Video Recorders

With support for 4 to 16 analog cameras, 120 to 480 IPS, and storage from 2 to 8 TB, these systems record out of the box, are easy to use, and readily meet entry level CCTV requirements. When requirements expand to IP recording, maximize ROI by using DS Control Point to connect these DVRs to Pelco HVRs.s



GENERAL

	DX4100	DX4500	DX4600
Analog Camera Inputs	4	8,16	8,16
Looping	Yes	Yes	Yes
IP Camera Inputs	None	None	None
Maximum Record Rate CIF	120 ips NTSC, 100 ips PAL	8-CH: 120 ips NTSC, 100 ips PAL; 16-CH: 240 ips NTSC, 200 ips PAL	8-CH: 240 ips NTSC, 200 ips PAL; 16-CH: 480 ips NTSC, 400 ips PAL
Maximum Record Rate 2CIF	60 ips NTSC, 50 ips PAL	8-CH: 60 ips NTSC, 48 ips PAL; 16-CH: 120 ips NTSC, 96 ips PAL	8-CH: 120 ips NTSC, 100 ips PAL; 16-CH: 240 ips NTSC, 200 ips PAL
Maximum Record Rate 4CIF	30 ips NTSC, 25 ips PAL	8-CH: 30 ips NTSC, 24 ips PAL; 16-CH: 60 ips NTSC, 48 ips PAL	8-CH: 60 ips NTSC, 48 ips PAL; 16-CH: 120 ips NTSC, 96 ips PAL
Compression Technology	H.264	MPEG4	MPEG4
Operating System	Embedded	Embedded	Embedded
Hard Drive Options, Internal	250 GB - 2 TB; 1TB with Optical Disk Drive	250 GB-2 TB	250 GB-8 TB
Storage Optimization	Yes (Partitioning)	Yes (Partitioning)	Yes (Partitioning)
Hard Drive Options, External	No	No	No
Third-Party External Storage	No	No	No
Standard Optical Disk Drive	None	None	CDRW
USB Ports	1 Front, 2 Rear USB 2.0	1 Front, 2 Rear USB 2.0	1 Front, 2 Rear USB 2.0
RAID Storage	No	No	No
Alarm Inputs / Relay Outputs	4 / 1	8 / 2	16 / 4
Audio Inputs / Outputs	4 / 1	2 / 1	4 / 1
Audio Listen Capabilities	None	None	None
PTZ Control	RS-422	Coaxitron, RS-422	Coaxitron, RS-422
Third-Party Dome Protocols	Yes	Yes	Yes
Front Panel Controls	Yes	Yes	Yes
Keyboard / Mouse Included	No / Yes	No / Yes	No / Yes
IR Remote Control	Yes	Yes	Yes
Optional Analog KBD Support	No	Yes	Yes
Multicasting	No	No	No
Multilingual Support	Yes	Yes	Yes
System Compatibility	DS Control Point	DS ControlPoint	DS ControlPoint
Certification Required	No	No	No

DISPLAY OPTIONS

Monitor Outputs	1 Main - VGA or BNC switch-selectable; 1 Spot BNC, Single channel view	1VGA or 1 Composite; 1 Spot	1VGA or 1 Composite; 1Spot
Camera Display	Main - 1, 4	1, 4, 6, 8, 9, 16	1, 4, 6, 8, 9, 16
Digital Zoom Live / Playback	No / No	No / Yes	No / Yes

FUNCTION

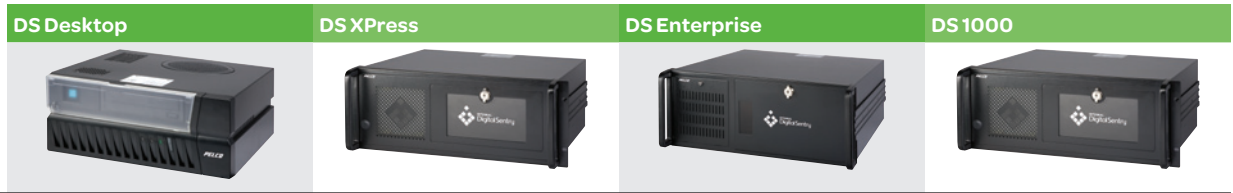
Alarm, Motion, Continuous, Scheduled Recording Modes	Yes	Yes	Yes
Increased Record Rate on Alarm/ Motion ("Bump on Alarm")	Yes	Yes	Yes
Pre-Alarm / Post-Alarm	Off, 5, 10, 20, 30, 40, 50, 60 Sec / 10, 20, 30, 40, 50 Sec, 1, 2, 3, 5, 10 Min	Off, 5, 10, 20, 30, 40, 50, 60 Sec / 10, 20, 30, 40, 50 Sec, 1, 2, 3, 5, 10 Min	Off, 5, 10, 20, 30, 40, 50, 60 Sec / 10, 20, 30, 40, 50 Sec, 1, 2, 3, 5, 10 Min
Optional ATM/POS Support	via API Integration	via API Integration	via API Integration
Video Analytics	No	No	No
Easy Evidence	No	No	No
WatchDog	No	Yes	Yes

REMOTE

PC Remote Client	Yes	Yes	Yes
View Live	Yes	Yes	Yes
Playback	Yes	Yes	Yes
E-mail on Alarm	Yes	Yes	Yes
PTZ Control	Yes	Yes	Yes
Remote Administration	Yes	Yes	Yes
PDA Client	No	No	No
Emergency Agent	Yes	Yes	Yes
Web Browser	Live View	Live View	Live View
Vista, Windows Support	Windows 7, All Vista versions via Control Point	Windows 7, All Vista versions via Control Point	Windows 7, All Vista versions via Control Point

► Hybrid Video Recorders

Pelco HVRs support from 4 to as many as 64 analog and network IP cameras including a wide-range of 3rd party IP cameras. With an open architecture these robust systems best match the needs of security professionals who are migrating from analog to IP recording. All DS HVRs support both SD and HD IP cameras. DX8100 supports SD recording.



GENERAL

Analog Camera Inputs	4, 9, 16	16, 32, 64, 128	up to 640	16, 32
Looping	No	Yes (optional)	Yes (optional)	No
IP Camera Inputs	Up to 16 (optional) 3rd party fixed, ptz and megapixel	Up to 16 (optional) 3rd party fixed, ptz and megapixel	Up to 16 (optional) 3rd party fixed, ptz and megapixel	Up to 16 (optional) 3rd party fixed, ptz and megapixel
Maximum Record Rate CIF	120ips NTSC 100 ips PAL	480 ips NTSC 400 ips PAL	480 ips NTSC 400 ips PAL	160 ips NTSC 130 ips PAL
Maximum Record Rate 2CIF	60ips NTSC 50 ips PAL	240 ips NTSC 200 ips PAL	240 ips NTSC 200 ips PAL	N/A
Maximum Record Rate 4CIF	30ips NTSC 25 ips PAL	120 ips NTSC 100 ips PAL	120 ips NTSC 100 ips PAL	N/A
Compression Technology	Integral Engineered (iVEX)	Integral Engineered (iVEX)	Integral Engineered (iVEX)	MPEG-4
Operating System	Windows XP PRO	Windows XP PRO	Windows XP PRO	Windows XP PRO
Hard Drive Options, Internal	2 TB	4 TB	8 TB	4 TB
Storage Optimization	Archive Utility	Archive Utility	Archive Utility	Archive Utility
Hard Drive Options, External	Yes	Yes	No	Yes
Third-Party External Storage	Yes	Yes	Yes	Yes
Standard Optical Disk Drive	DVDRW	DVDRW	DVDRW	DVDRW
USB Ports	0 Front, 6 Back USB 2.0	2 Front USB 2.0, 4 Back USB 2.0	2 Front USB 2.0, 4 Back USB 2.0	2 Front USB 2.0, 6 Back USB 2.0
RAID Storage	No	Yes	Yes	Yes
Alarm Inputs / Relay Outputs	15/1	15/1	15/1	15/1
Audio Inputs / Outputs	4 / 1	4 / 1	4 / 1	16 / 1
Audio Listen Capabilities	Live over network	Live over network	Live over network	Live over network
PTZ Control	RS-422 / 232	RS-422 / 232	RS-422 / 232	RS-422 / 232
Third-Party Dome Protocols	Yes	Yes	Yes	Yes
Front Panel Controls	EasyEvidence	EasyEvidence	EasyEvidence	EasyEvidence
Keyboard / Mouse Included	Yes / Yes	Yes / Yes	Yes / Yes	Yes / Yes
IR Remote Control	No	No	No	No
Optional Analog KBD Support	Yes	Yes	Yes	Yes
Multicasting	No	No	No	No
Multilingual Support	Yes	Yes	Yes	Yes
System Compatibility	DS ControlPoint, Archive Utility, DS DataPoint	DS ControlPoint, Archive Utility, DS DataPoint	DS ControlPoint, Archive Utility, DS DataPoint	DS ControlPoint, Archive Utility, DS DataPoint
Certification Required	Yes	Yes	Yes	Yes

DISPLAY OPTIONS

Monitor Outputs	1VGA; 1 Composite	1VGA; 1 to 4 Composite	1VGA; 1 to 4 Composite	1VGA
Camera Display	1, 4, 9, 16, 25, 36	1, 4, 9, 16, 25, 36	1, 4, 9, 16, 25, 36	1, 4, 9, 16, 25, 36
Digital Zoom Live / Playback	Yes / Yes	Yes / Yes	Yes / Yes	Yes / Yes

FUNCTION

Alarm, Motion, Continuous, Scheduled Recording Modes	Yes	Yes	Yes	Yes
Increased Record Rate on Alarm/ Motion (Bump on Alarm)	Yes	Yes	Yes	Yes
Pre-Alarm / Post-Alarm	5 Minutes / 16 Minutes	5 Minutes / 16 Minutes	5 Minutes / 16 Minutes	5 Minutes / 16 Minutes
Optional ATM/POS Support	Yes	Yes	Yes	Yes
Video Analytics	Up to 4 (Optional)	Up to 4 (Optional)	Up to 4 (Optional)	No
Easy Evidence	Yes	Yes	No	Yes
WatchDog	Yes	Yes	Yes	Yes

REMOTE

PC Remote Client	Yes	Yes	Yes	Yes
View Live	Yes	Yes	Yes	Yes
Playback	Yes	Yes	Yes	Yes
E-mail on Alarm	Yes	Yes	Yes	Yes
PTZ Control	Yes	Yes	Yes	Yes
Remote Administration	Yes	Yes	Yes	Yes
PDA Client	No	No	No	No
Emergency Agent	No	No	No	No
Web Browser	No	No	No	No
Vista, Windows Support	Yes	Yes	Yes	Yes

Hybrid Video Recorders Continued >>

► Hybrid Video Recorders

Pelco HVRs support from 4 to as many as 64 analog and network IP cameras including a wide-range of 3rd party IP cameras. With an open architecture these robust systems best match the needs of security professionals who are migrating from analog to IP recording. All DS HVRs support both SD and HD IP cameras. DX8100 supports SD recording.



GENERAL

	DX8100	DS RealVue Desktop	DS RealVue XPress	DS RealVue RAID
Analog Camera Inputs	8, 16, 24, 32	4, 8, 16	8, 16, 32	8, 16, 32
Looping	Yes	No	No	Yes (Optional)
IP Camera Inputs	Up to 24 or 32 depends on available resources	Up to 16 (optional) 3rd party fixed, ptz and megapixel	Up to 16 (optional) 3rd party fixed, ptz and megapixel	Up to 16 (optional) 3rd party fixed, ptz and megapixel
Maximum Record Rate CIF	480 ips NTSC, 400 ips PAL	480 ips NTSC 400 ips PAL	960 ips NTSC 800 ips PAL	960 ips NTSC 800 ips PAL
Maximum Record Rate 2CIF	240 ips NTSC, 200 ips PAL	480 ips NTSC 400 ips PAL	960 ips NTSC 800 ips PAL	960 ips NTSC 800 ips PAL
Maximum Record Rate 4CIF	120 ips NTSC, 100 ips PAL	480 ips NTSC 400 ips PAL	960 ips NTSC 800 ips PAL	960 ips NTSC 800 ips PAL
Compression Technology	Pelco	MPEG-4	MPEG-4	MPEG-4
Operating System	Windows®XP Embedded	Windows XP PRO	Windows XP PRO	Windows XP PRO
Hard Drive Options, Internal	250 GB-8 TB	2 TB	4 TB	Up to 4TB RAID 10; Up to 6TB RAID 5; 250GB x 2 RAID 1
Storage Optimization	None	Archive Utility	Archive Utility	Archive Utility
Hard Drive Options, External	Yes	No	Yes	Yes
Third-Party External Storage	Yes - USB	Yes	Yes	Yes
Standard Optical Disk Drive	DVDRW	DVDRW	DVDRW	DVDRW
USB Ports	2 Front, 4 Rear USB 2.0	0 Front USB 2.0, 6 Back USB 2.0	2 Front USB 2.0, 4 Back USB 2.0	2 Front USB 2.0, 4 Back USB 2.0
RAID Storage	Yes	No	Yes	Yes
Alarm Inputs / Relay Outputs	8, 16, 24, 32 / 8, 16, 24	15 / 1	15 / 1	15 / 1
Audio Inputs / Outputs	2 Standard 8, 16, 24, 32 Optional / 1	16 / 1	16 / 1	32 / 1
Audio Listen Capabilities	Live over network	Live over network	Live over network	Live over network
PTZ Control	Coaxitron, RS-422	RS-422 / 232	RS-422 / 232	RS-422 / 232
Third-Party Dome Protocols	Yes	Yes	Yes	Yes
Front Panel Controls	No	EasyEvidence	EasyEvidence	EasyEvidence
Keyboard / Mouse Included	Yes / Yes	Yes / Yes	Yes / Yes	Yes / Yes
IR Remote Control	No	No	No	No
Optional Analog KBD Support	Yes	Yes	Yes	Yes
Multicasting	Yes, Layer 2	No	No	No
Multilingual Support	Yes	Yes	Yes	Yes
System Compatibility	DS ControlPoint	DS ControlPoint, Archive Utility, DS DataPoint	DS ControlPoint, Archive Utility, DS DataPoint	DS ControlPoint, Archive Utility, DS DataPoint
Certification Required	No	Yes	Yes	Yes

DISPLAY OPTIONS

	DX8100	DS RealVue Desktop	DS RealVue XPress	DS RealVue RAID
Monitor Outputs	1 Main - VGA; Dual Display - VGA or BNC; Composite BNC - 1 with 8/16; 2 with 24/32	1 VGA; 1 to 2 Composite	1 VGA; 1 to 4 Composite	1 VGA; 1 to 4 Composite
Camera Display	1, 4, 9, 10, 16, 25, 36, 1+5, 2+8, 1+23	1, 4, 9, 16, 25, 36	1, 4, 9, 16, 25, 36	1, 4, 9, 16, 25, 36
Digital Zoom Live / Playback	Yes / Yes	Yes / Yes	Yes / Yes	Yes / Yes

FUNCTION

	DX8100	DS RealVue Desktop	DS RealVue XPress	DS RealVue RAID
Alarm, Motion, Continuous, Scheduled Recording Modes	Yes, including ATM/POS	Yes	Yes	Yes
Increased Record Rate on Alarm/ Motion (Bump on Alarm)	Yes	Yes	Yes	Yes
Pre-Alarm / Post-Alarm	1 Minute Standard; 15 Minutes with Memory Upgrade / 1 Minute Standard; 15 Minutes with Memory Upgrade	5 Minutes / 16 Minutes	5 Minutes / 16 Minutes	5 Minutes / 16 Minutes
Optional ATM/POS Support	Via RS232 connect & text overlays; or via API Integration	Yes	Yes	Yes
Video Analytics	3rd Party	Up to 4 (Optional)	Up to 4 (Optional)	Up to 4 (Optional)
Easy Evidence	No	Yes	Yes	Yes
WatchDog	Yes	Yes	Yes	Yes

REMOTE

	DX8100	DS RealVue Desktop	DS RealVue XPress	DS RealVue RAID
PC Remote Client	Yes	Yes	Yes	Yes
View Live	Yes	Yes	Yes	Yes
Playback	Yes	Yes	Yes	Yes
E-mail on Alarm	Yes	Yes	Yes	Yes
PTZ Control	Yes	Yes	Yes	Yes
Remote Administration	Yes	Yes	Yes	Yes
PDA Client	Live View	No	No	No
Emergency Agent	Yes	No	No	No
Web Browser	Live View, PTZ	No	No	No
Vista, Windows Support	Windows 7, All Vista versions via Control Point	Yes	Yes	Yes

Network Video Recording & Management Solutions

DS-NVR is ideal for needs up to 32 IP cameras; Endura XPress is suitable to 64 network cameras; and Endura 2.1 has unlimited capacity for cameras, storage, and provides system redundancy. This product group meets the needs for small to extensive enterprise requirements.



GENERAL

	DS NVR	EnduraXpress	Endura 2.1
Analog Camera Inputs	4, 16, 32	Encoder Required	Encoder Required
Looping	N/A	Yes	Yes
IP Camera Inputs	4, 16, 32 3rd party fixed, ptz and megapixel	32 or 64 Pelco Fixed or PTZ	Unlimited Pelco Fixed or PTZ
Maximum Record Rate CIF	960 ips NTSC 800 ips PAL	250Mbps	Unlimited Pelco Fixed or PTZ
Maximum Record Rate 2CIF	960 ips NTSC 800 ips PAL	250Mbps	Unlimited Pelco Fixed or PTZ
Maximum Record Rate 4CIF	960 ips NTSC 800 ips PAL	250Mbps	Unlimited Pelco Fixed or PTZ
Compression Technology	Camera Specific MPEG - 4, H.264, MJPEG	MPEG4 & H.264	MPEG4 & H.264
Operating System	Windows XP PRO	Embedded Linux® on Compact Flash	Embedded Linux® & Windows
Hard Drive Options, Internal	4 TB	3 TB - 24TB	Unlimited
Storage Optimization	Archive Utility	EnduraStor	EnduraStor
Hard Drive Options, External	No	No	No
Third-Party External Storage	Yes	Fiber	Fiber
Standard Optical Disk Drive	DVDRW	User Supplied PC	CD/DVDRW WS5070
USB Ports	2 Front USB 2.0, 6 Back USB 2.0	User Supplied PC	1 front, 6 rear USB 2.0 WS5070
RAID Storage	Yes	Yes	Yes
Alarm Inputs / Relay Outputs	N/A / N/A	See Encoder/Camera / See Encoder/Camera	Unlimited / Unlimited
Audio Inputs / Outputs	No / No	See Encoder/Camera / See Encoder/Camera	Unlimited / Unlimited
Audio Listen Capabilities	None	Live over network	Live over network
PTZ Control	IP PTZ Cams	Coaxitron, RS-422	Coaxitron, RS-422
Third-Party Dome Protocols	Yes	Yes	Yes
Front Panel Controls	No	No	No
Keyboard / Mouse Included	Yes / Yes	Yes / Yes	Yes / Yes
IR Remote Control	No	No	No
Optional Analog KBD Support	Yes	Yes	Yes
Multicasting	No	Yes	Yes
Multilingual Support	Yes	Yes	Yes
System Compatibility	DS ControlPoint, Archive Utility, DS DataPoint	Endura	Endura
Certification Required	No	No	Yes

DISPLAY OPTIONS

	DS NVR	EnduraXpress	Endura 2.1
Monitor Outputs	1 VGA	Unlimited DVI/VGA/S-Video w/Decoders/WS5070/VCD	Unlimited DVI/VGA/S-Video w/Decoders/WS5070/VCD
Camera Display	1, 4, 9, 16, 25, 36	1, 4, 9, 16 Per Monitor	1, 4, 9, 16 Per Monitor
Digital Zoom Live / Playback	Yes / Yes	Yes / Yes	Yes / Yes

FUNCTION

	DS NVR	EnduraXpress	Endura 2.1
Alarm, Motion, Continuous, Scheduled Recording Modes	Yes	Yes	Yes
Increased Record Rate on Alarm/Motion (Bump on Alarm)	5 Minutes / 16 Minutes	Yes with Endura Stor	Yes with Endura Stor
Pre-Alarm / Post-Alarm	Yes	1 Minute - 999 minute / 1 Minute - 999 minute	1 Minute - 999 minute / 1 Minute - 999 minute
Optional ATM/POS Support	Up to 4 (Optional)	ASCII	ASCII
Video Analytics	No	Yes	Yes
Easy Evidence	N/A	Yes	Yes
Watchdog	Yes	Yes	Yes

REMOTE

	DS NVR	EnduraXpress	Endura 2.1
PC Remote Client	Yes	Yes	Yes
View Live	Yes	Yes	Yes
Playback	Yes	Yes	Yes
E-mail on Alarm	IP PTZ Cams	Yes	Yes
PTZ Control	Yes	Yes	Yes
Remote Administration	No	Yes	Yes
PDA Client	No	No	No
Emergency Agent	No	No	No
Web Browser	Yes	Gateway	Gateway
Vista Compliant	No	Yes	Yes

▶ Network Video Encoders

This family of H.264 network video encoders provide high performance, single- to multi-channel video encoding, integrating analog cameras and positioning systems into an IP video surveillance system.

NET5400 Encoder



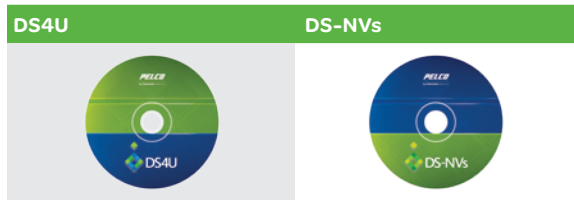
**NET5401, NET5402,
NET5404, T, T-I**

Video Resolutions	4CIF, 2CIF, CIF, QCIF
Frame Rate	25/30fps at 4CIF maximum, scalable
Motion Detection	Yes
Image Stabilization	Analytic
Alarm Inputs	3
Relay Outputs	1
Onboard Memory	User Supplied Micro SD
Operating Temperature Range	Minimum of 32°F (0°C), Maximum 122°F (*50°C)
Compression Formats	MPEG-4, M-JPEG, H.264
Data Rate	20 Kbps – 6 Mbps (2 Mbps per stream X3)
Video Streams	3
Audio	Two-way, full or half duplex
Analog Data Formats	No
Analog Output	Looping on single and dual channel
Network Protocols	TCP/IP, UDP/IP (Unicast, multicast IGMP), UPnP, DNS, DHCP, RTP, NTP
Encryption	Yes
Latency	117ms - MPEG-4
Web Browser Access	Pelco Device Utility - Requires JRE
Open Architecture	Yes - API Available
Users	10 Simultaneous, unlimited using multicast
POE	IEEE 802.3af class 3 on single channel
Power	18-30 VAC, 24 VAC nominal; 0.75 A, 50/60 Hz nominal
Pelco System Compatibility	DVR5100, DX8100, Endura, DS
Warranty	3 Years



▶ Video Management Software

This software only solution is ideal when the preference is for corporate hardware, maximizing existing purchase and support agreements. All Digital Sentry products support a wide range of 3rd party IP cameras and are ideally suited for security applications from 1 to 64 SD and HD IP cameras.



	DS4U	DS-NVs
Maximum IP Channels Supported	4	64
# IP Brands / Models Supported	1 (Pelco Only) / 17	15 / Over 117*
Supported Video Appliances	Intrinsa, Pivot3	Intrinsa, Pivot3
Base License Fee Applies	N/A	✓**
Camera License Fees Apply	N/A	✓**
Annual Maintenance Fees	None	None
Megapixel Support	✓	✓
Maximum # of Clients	Unlimited	Unlimited
H.264 Support	✓	✓
MPEG-4 Support	✓	✓
MJPEG Support	✓	✓
Quick Setup	✓	✓
Upgradable	✓	N/A
Export Formats	H.264, MPEG4, MPEG, JPEG, AVI, Native DB	H.264, MPEG4, MPEG, JPEG, AVI, Native DB
Analog Joystick/Keyboard Support	KBD300A	KBD300A
Multiple Viewing Panes via Monitor Tear Off Tabs	✓	✓
Alarm Pop-up Notifications	✓	✓
Search Tools	Date/Time/Events/Motion/Scrub Bar/POS/Analytics	Date/Time/Events/Motion/Scrub Bar/POS/Analytics
Transaction Support	via Data Connex †	via Data Connex †
Analytics Support	Third Party †	Third Party †
# Preset Positions Per Camera	Up to Camera Limit	Up to Camera Limit
Preset Tours	✓	✓
Archive Video Recording	via Archive Utility †	via Archive Utility †
3rd Party Integrations ***	✓	✓
Published API/SDK	✓	✓
Certification Required	No	No
Free Software Updates	Yes	Yes
Compatibility via Control Point	Pelco DX Series 4100, 4500, 4600, 8100 Pelco DVX Master Control Series	Pelco DX Series 4100, 4500, 4600, 8100 Pelco DVX Master Control Series

*IP Brands include, but are not limited to: ACTI, Arecont, Axis (Cameras/Encoders), Bosch, Canon, Grandeye, iPIX, iQinVision, JVC, NetBotz, Panasonic, Pelco (Cameras/Encoders), Sony (Cameras/Encoders), Vivotek
** Promotional offer through 10/31/2010 provides free upgrade from DS4U, i.e. base license and first 4 Pelco camera licenses are free. Following 10/31/2010 fee structure may differ.
† Optional Product

▶ Imaging & Head-End Compatibility Chart

	DVR5100	Digital Sentry	DX8100	DVR5300	NVR5100	Endura	EnduraXpress
NETWORK PTZ CAMERAS							
Spectra IV IP	✓	✓	✓	✓	✓	✓	✓
Spectra Mini IP	✓	✓	✓	✓	✓	✓	✓
Spectra IV IP H.264	✓*	✓*	✓*	✓*	✓*	✓*	✓*
Spectra HD		✓*				✓*	✓*
NETWORK BOX CAMERAS							
Sarix IX IXS0	✓	✓	✓	✓	✓	✓	✓
Sarix IX IX10		✓				✓	✓
Sarix IX IX30		✓				✓	✓
Sarix IX IXE10		✓				✓	✓
Sarix IX IXE20		✓				✓	✓
IP3701	✓	✓	✓	✓	✓	✓	✓
NETWORK INDOOR DOME CAMERAS							
Sarix IM IMS0	✓	✓		✓	✓	✓	✓
Sarix IM IM10		✓				✓	✓
Sarix ID IDSO	✓	✓		✓	✓	✓	✓
Sarix ID ID10		✓				✓	✓
Sarix ID ID30		✓				✓	✓
Sarix ID IDE10		✓				✓	✓
Sarix ID IDE20		✓				✓	✓
NETWORK RUGGED DOME CAMERAS							
Sarix IE IES0	✓	✓		✓	✓	✓	✓
Sarix IE IE10		✓				✓	✓
Sarix IE IEE10		✓				✓	✓
Sarix IE IEE20		✓				✓	✓
Sarix IE IE30		✓				✓	✓
IP110	✓	✓	✓	✓	✓	✓	✓
NETWORK VIDEO ENCODERS							
NET5301T		✓		✓	✓	✓	✓
NET5308T		✓		✓	✓	✓	✓
NET5401T		✓				✓	✓
NET5402T		✓				✓	✓
NET5404T		✓				✓	✓

* Upon Release **Note:** This chart is subject to change. Support for new devices may first appear in product release notes and/or product documentation.



Note: All Pelco LCD Monitors are compatible with above products.