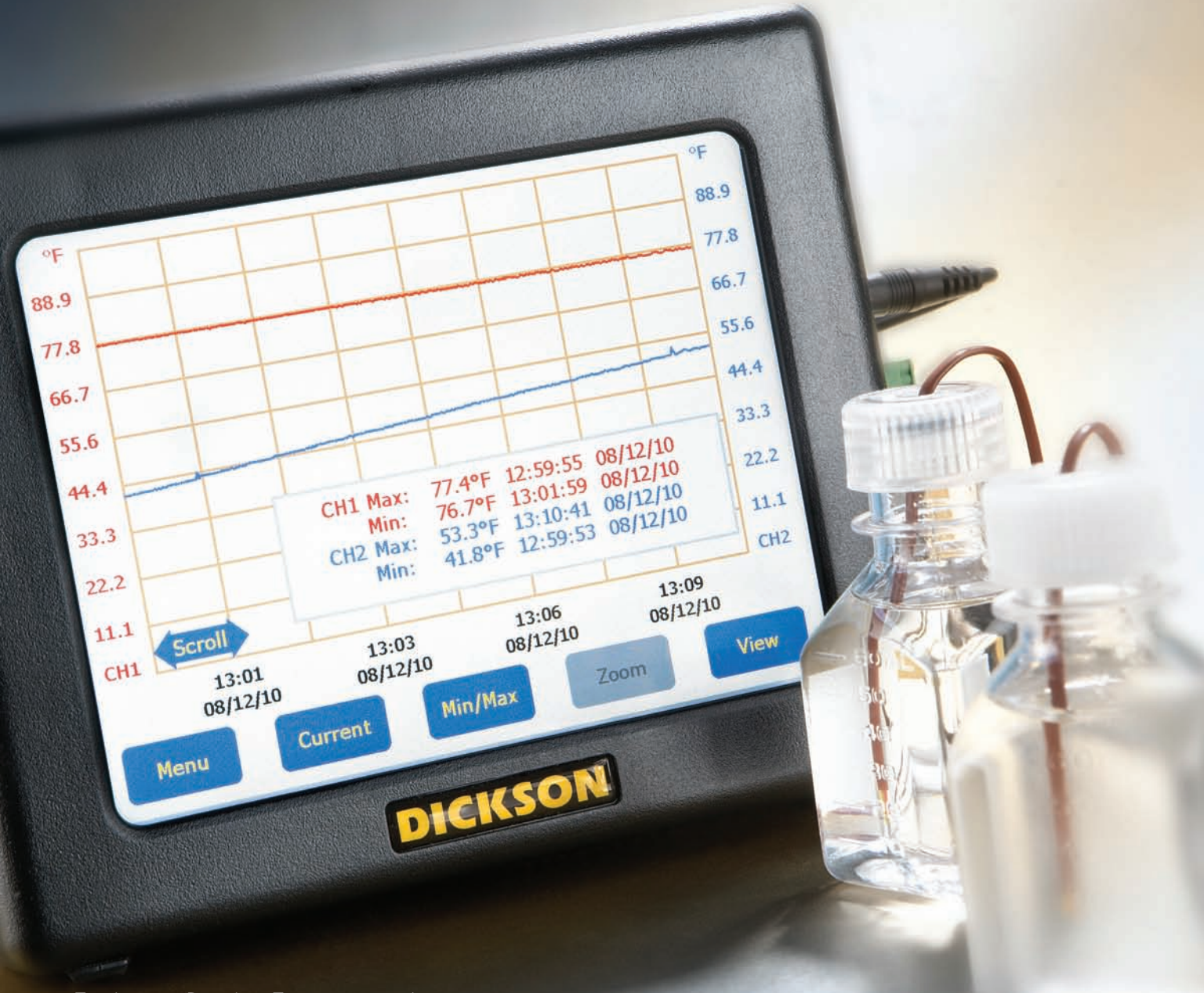


Dickson Means Data.

Instrumentation for Capturing Critical Data

Fall 2010 Catalog

CD233



Touchscreen Paperless Temperature and
Temperature/Humidity Logger
See p. 3

DICKSON



The Dickson Advantage.

Dickson Means Data. Whether you monitor temperature, humidity, or pressure, Dickson instrumentation can capture and present that data in a variety of ways.

Dickson Chart Recorders provide a record of your data on a paper chart. A chart recorder is extremely easy to use, requires no technical skill, and anyone can be trained to use a chart recorder in just minutes. Our 8" chart recorders offer the greatest view of the recorded data. Dickson 6", 4" and 3" chart recorders are for applications where space is a concern.

Dickson Data Loggers present data in a traditional "temperature vs. time" graph on your computer via our software. Data loggers give you significantly more precise data than chart recorders. They also allow you to customize graphs by zooming in and out of specific ranges, dates, and times. Data loggers allow you to store your graphs and data electronically and make it easier to share data with others.

WiZARD2 Data Loggers and Ethernet Data Loggers can be set up on a network of connected loggers either wirelessly or through your Ethernet connection. These Temperature and Humidity Systems offer more sophisticated features like text and email alarm notifications.

TABLE OF CONTENTS

Temperature Monitoring

Loggers 16-19
Chart Recorders 4,5,6
Paperless 3
Indicators 12,14

Temperature/Humidity Monitoring

Loggers 18,19
Chart Recorders 7
Paperless 3
Indicators 12

Temperature and Humidity Systems

Wireless 10
Ethernet 11

Pressure Monitoring

Loggers 8
Chart Recorders 9

Electronic Signal Monitoring

Loggers 13
Chart Recorders 13

Vaccine, Drug & Blood Bank Monitoring

Loggers 14
Chart Recorders 14,15
Indicators 14



Standard View

Digital Graph Displays Trends

Full Control at your fingertips!

- Jumbo 4.1" x 5.5" touchscreen temperature and temperature/humidity logger
- Zoom and scroll at the touch of the screen
- Audible/visual alarms
- USB and FLASH card data download
- Rechargeable battery backup
- No running back to your PC to see data. Everything you need at the touch of a finger!

Calibration Options Available

FT500

FH520



Min/Max and Current Readings View

FH525



Jumbo Current Readings View

FT520



Zoom Functionality

MODEL	REMOTE PROBE	PROBE TYPE	TEMPERATURE RANGES	ACCURACY	RELAYS
TEMPERATURE					
FT500		Thermistor KT/C KT/C	0 to 122°F	±1.2°F	
FT525	•		-40°F to 300°F	±0.5°F	
FT520	1		-300°F to 2000°F	±1.8°F	
FT530	2		-300°F to 2000°F	±1.8°F	•
TEMPERATURE/HUMIDITY					
FH520			0 to 122°F	±0.8°F	
FH525	•		-40°F to 185°F	±0.8°F	
FH535	•		-40°F to 185°F	±0.8°F	•

For more information, please visit www.DicksonData.com.

4 Inch Temperature Chart Recorder

Designed with simplicity in mind!

Easy-to-use, battery operated and portable

- Digital display
- 24 hour / 7 day recording time
- Wall Mount
- Battery door
- Hinged door

Applications

- Refrigerators
- Warehouses
- Freezers
- Laboratories

Calibration Options Available

SL4100 Temperature Model



MODEL	DIGITAL DISPLAY	TEMPERATURE RANGES
SL4350	<ul style="list-style-type: none"> • • • 	-22 to 122°F
SL4100		0 to 100°F
SL490		45 to 90°F
SK4350		-22 to 122°F
SL4100		0 to 100°F
		-30 to 50°C
	-18 to 37°C	
	7 to 32°C	
	-30 to 50°C	
	-18 to 37°C	

Charts sold separately. For charts and accessories, please visit www.DicksonData.com.





3 Inch Mini Temperature Chart Recorder

Ideal when space is a concern!

Applications

- Refrigerators
- Clean Rooms
- Transportation
- Storage

Calibration Options Available

SC367

MODEL	TEMPERATURE RANGES
SC367	-14 to 32°F • -25 to 0°C
SC377	4 to 50°F • -15 to 10°C
SC386	22 to 68°F • -5 to 20°C
SC387	50 to 96°F • 10 to 35°C
SC397	76 to 122°F • 25 to 50°C

Charts sold separately. For charts and accessories, please visit www.DicksonData.com.



Disposable Recorder

One-time use! This disposable temperature recorder is perfect for monitoring goods while in transit.

Multiple features tailored for shipping needs:

- Failsafe start-up and pull out start tab
- Tamper-proof crimped seal
- Shock and vibration protection
- Low cost shipping alternative

D301

MODEL	TEMPERATURE RANGES	RECORDING TIME
D301	-20 to 100°F • -30 to 37.5°C	10 Day
D302	-20 to 100°F • -30 to 37.5°C	20 Day
D307	-20 to 100°F • -30 to 37.5°C	40 Day
D309	-20 to 100°F • -30 to 37.5°C	75 Day

8 Inch Temperature Chart Recorder

Easy-to-read chart lets you see temperature details, not just trends!

Industries & Applications

- Ovens
- Warehouses
- Food Processing
- Archives
- Laboratories
- Health - Blood storage, Dialysis centers, Medical Centers

MODELS AND FEATURES

KT800 Probe. Battery operated.

KT802 Probe. Display.

KT803 Probe. Display. Alarm.

KT804 Probe. Display. Alarm. High-Temp.

KT856 2 Probes. Display. Alarm. Relays.

FOR RANGES, SEE ADJACENT PAGE



KT803

6 Inch Temperature Chart Recorder

Easy-to-read chart lets you see temperature details, not just trends!

Industries & Applications

- Refrigerators
- Storage
- Clean Rooms
- Laboratories
- Pharmaceuticals
- Medical Equipment

MODELS AND FEATURES

KT621 Probe.

KT622 Probe. Display.

KT625 Probe. Display. Alarm. Relays.

FOR RANGES, SEE ADJACENT PAGE



KT622



KT803

8 Inch Temperature & Humidity Chart Recorder

Easy-to-read chart lets you see temperature details, not just trends!

Industries & Applications

- Aerospace
- Pharmaceuticals
- Archives
- Laboratories
- Clean Rooms
- Ovens
- Warehouses
- Health - Blood storage, Dialysis centers, Medical Centers

MODELS AND FEATURES

- TH800** Battery operated.
- TH802** Display.
- TH803** Probe. Display. Alarm.
- TH805** Probe. Display. Alarm. Relays.

FOR RANGES, SEE BELOW

Chart Recorder Temperature Ranges

RANGES	TEMPERATURE MODELS	RANGES	TEMPERATURE & HUMIDITY MODELS
-50 to +50°F/C	KT800, KT802, KT803, KT856	32 to 120°F	TH800
-20 to 20°F/C	KT804	0 to 50°C	TH800
50 to 150°F/C	KT804	-20 to 120°F	TH802, TH803, TH805
20 to 100°F/C	KT804	-20 to 50°C	TH802, TH803, TH805
0 to 100°F/C	KT800, KT802, KT803, KT856	40 to 110°F	TH802, TH803, TH805
0 to 150°F/C	KT802, KT803, KT856	5 to 40°C	TH802, TH803, TH805
0 to 250°F/C	KT800, KT802, KT803, KT856	0 to 185°F	TH803, TH805
0 to 500°F/C	KT802, KT803, KT856		
0 to 1000°F/C	KT804		
0 to 2000°F/C	KT804		
-100 TO 0°F/C	KT621, KT622, KT625		
-50 TO 0°F/C	KT621, KT622, KT625		
-50 TO +50°F/C	KT621, KT622, KT625		
0 TO 50°F/C	KT621, KT622, KT625		
0 TO 100°F/C	KT621, KT622, KT625		
50 TO 100°F/C	KT621, KT622, KT625		
0 TO 250°F/C	KT621, KT622, KT625		
0 TO 500°F/C	KT621, KT622, KT625		

Charts sold separately. For charts and accessories, please visit www.DicksonData.com.



PR125

Pressure Data Logger

User-friendly features!

- One-second sampling rate
- User-replaceable battery
- Pressure sensor includes built-in diaphragm seal
- Display, USB connectivity, FLASH memory downloads
- IP68 case
- Delayed start - start logging once unit is in place

- A.** Digital display
- B.** USB
- C.** FLASH memory card
- D.** Battery
- E.** Splashproof case

- PR125** Range 0 to 100 PSI.
- PR325** Range 0 to 300 PSI.
- PR525** Range 0 to 500 PSI.

Calibration Options Available

Pressure Logger Locking Case

Protect your pressure loggers!

Using the A721 with your Dickson pressure data logger ensures that unauthorized individuals will not tamper with your logger. These locking cases are ideal for use out in the field.

A721 Works with PR125, PR325 and PR525



A721 Locking Case



Fire hydrant adapter (A793) necessary to connect to fire hydrants.

Software required and sold separately. For more information, please visit www.DicksonData.com.

8 Inch Pressure Chart Recorder

New ranges and splashproof case!

Features

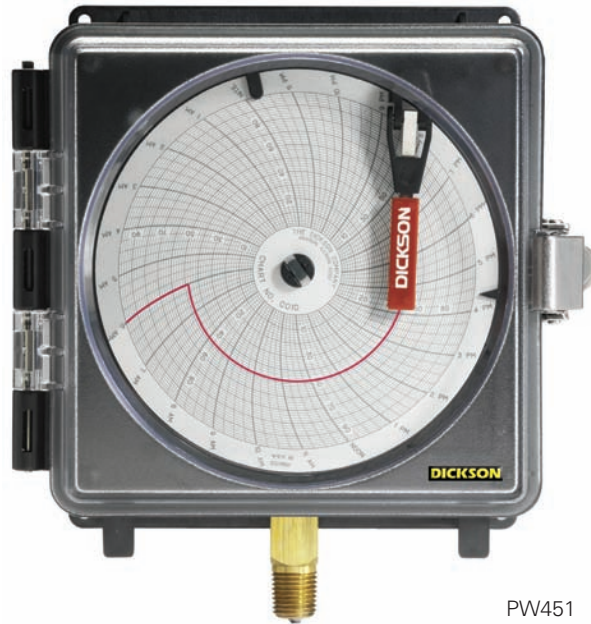
- Rugged low-maintenance design features
- Single AA battery power
- Corrosion-resistant case
- 7-day or 24-hour operation
- Keyhole slot for wall mount
- Splashproof case with an IP rating of 66

PW860	7-day.	0 to 100 PSI.
PW861	24-hour.	0 to 100 PSI.
PW864	7-day.	0 to 200 PSI.
PW865	24-hour.	0 to 200 PSI.
PW866	7-day.	0 to 300 PSI.
PW867	24-hour.	0 to 300 PSI.
PW875	24-hour.	0 to 1000 PSI.

Calibration Options Available



PW8



PW451

4 Inch Pressure Chart Recorder

Splashproof case!

Features

- Operates up to one full year on a single AA battery
- 1/4 inch NPT connection
- For applications where splashproof IP rating is not required
- 7-day or 24-hour operation

PW450	7-day.	0 to 100 PSI.
PW451	24-hour.	0 to 100 PSI.
PW454	7-day.	0 to 200 PSI.
PW455	24-hour.	0 to 200 PSI.
PW456	7-day.	0 to 300 PSI.
PW457	24-hour.	0 to 300 PSI.
PW459	24-hour.	0 to 500 PSI.

Calibration Options Available

Charts sold separately. For charts and accessories, please visit www.DicksonData.com.

WiZARD2 Wireless Temperature & Humidity Multi-Point Monitoring System

Create a scalable monitoring network!

Place these loggers throughout your facility and receive all data automatically at your PC. No retrieving data from loggers, no hard wiring loggers back to your PC. This solution is the easiest and most cost-effective way to create a scalable monitoring network.

Features

- Email and text alerts with WiZARD2 Secure software
- Eliminates the need to change charts and pens
- Data automatically downloaded to computer wirelessly
- Loggers continue to log in the event of a power outage
- Up to 3 months data backup storage*

* Varies based on logger settings.

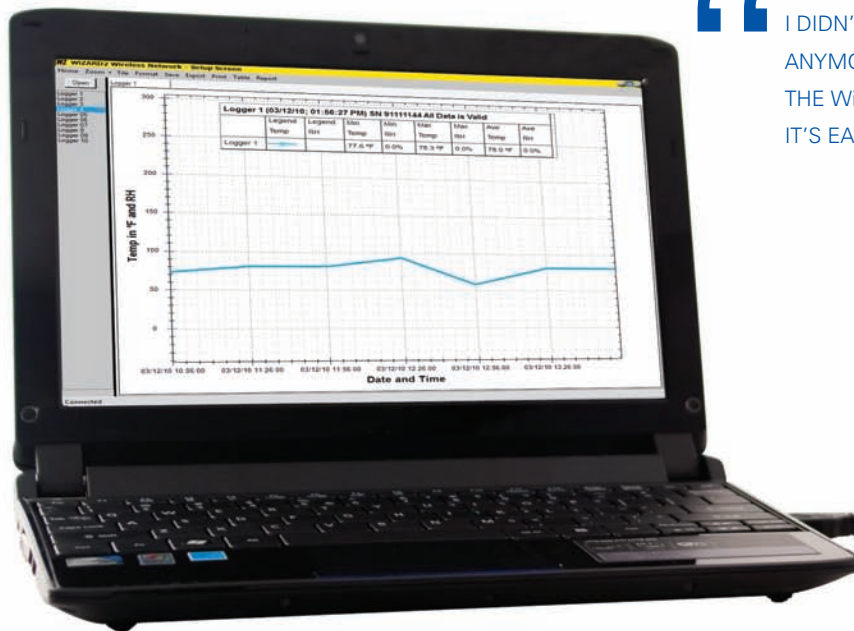


WT240

Calibration Options Available

ORDERING INFORMATION ON ADJACENT PAGE

“ I DIDN'T WANT TO CHANGE CHARTS AND PENS ANYMORE OR DEAL WITH DOWNLOADING DATA. THE WIZARD2 SYSTEM WAS A GREAT OPTION. IT'S EASY TO SET UP AND EVEN EASIER TO USE. ”



Netbook models may vary.



Receiver (WR220) - Receives data from as many as 60 loggers.

WiZARD2 Ordering Information

MODEL	DESCRIPTION
LR220	Receiver and software pre-loaded on a Dickson Certified Netbook*
LR225	Receiver and 21CFR11 software pre-loaded on a Dickson Certified Netbook*
WR220	Receiver and software only
WR225	Receiver and 21CFR11 software only
WA200	Repeater to extend distance
WT200	Temperature logger -22 to 122°F
WT220	Temperature logger with digital display -22 to 122°F
WT240	Temperature logger with digital display, probe, alarm, AC power, -300 to 2000°F
WH220	Temperature & Humidity logger -22 to 122°F
WH225	Temperature & Humidity logger with digital display -22 to 122°F
WH245	Temperature & Humidity logger with digital display, probe, alarm, AC power, -20 to 185°F
SVC100	Dickson Factory installation on Netbook (up to 10 units)

For on-site installation and for systems exceeding 10 units, call our Systems Specialists at **888.452.4626** for a quote.

*Dickson recommends using a dedicated PC with the WiZARD2 system



TM725 Temperature/Humidity model with Remote Probe

Ethernet Connected Temperature & Humidity Monitoring System

Manage all of your data loggers from one PC!

SM720 Temperature logger with one thermocouple probe -300 to 2000°F

SM725 Temperature logger with two thermocouple probes -300 to 2000°F

TM725 Temperature & humidity logger with remote probe -40 to 185°F

Calibration Options Available



SM725 Temperature model with 2 Remote Probes

Dicksonware™ software, purchased separately, is required for setup and downloading data. For on-site installation and for systems exceeding 10 units, call our Systems Specialists at **888.452.4626** for a quote.

Don't let your calibration lapse!

Be sure to have your Dickson instrument re-calibrated!

All instruments lose accuracy over time due to normal usage and the environmental conditions to which they are exposed. Periodic NIST certified calibrations maintain the accuracy of your data loggers and chart recorders throughout their lives.

Calibration is **never** optional. Whatever situations compel you to monitor temperature, humidity, pressure, or other conditions, also require you to calibrate the data loggers or chart recorders used to document those conditions.

Depending on the application your instrument should be re-calibrated every 6-12 months. If you have exceeded that time please call us at **1.800.323.2448** to get your instrument re-calibrated.



EXISTING UNIT CALIBRATIONS	BASIC (N150)	HIGH-MED-LOW (N150)	BEFORE & AFTER (N550)	COMPLIANCE-MAX (N450)
NIST Traceable	✓	✓	✓	✓
A2LA-17025 Compliance				✓
Before Data			✓	✓
After Data	✓	✓	✓	✓
3-Points		✓	✓	✓
1-Point	✓			✓

Custom Point (N995) also available: User chooses temperature point to be calibrated, NIST Traceable, supplies after data



Indicators

Quickest readings!

Available Features

- Digital display
- Infrared (IR)
- Stores and recalls 16 readings
- Hold button stores readings for later recall
- K-thermocouple probe

MODEL	TEMPERATURE RANGES
TEMPERATURE	
D182	-76 to +932°F
D186	-67 to 536°F
TC200	-300 to +2000°F
TEMPERATURE/HUMIDITY	
TH300	-22 to +185°F • -30 to 185°C



ET855

Chart Recorder

Easy connection!

Features

- Audible/visual alarm
- Large digital display
- Two screw terminal connectors on the back of the instrument for easy connection of the input transmitter

CHART RANGE	7-DAY CHART	24-HR CHART	31-DAY CHART
0 to +100	C412	C410	C409
0 to +1000	C440	C441	
0 to +200	C436	C456	
0 to +14	C453	C457	
0 to +150	C435	C425	
0 to +300	C431	C422	
-10 to +10	C405	C495	
-150 to +250	C452	C442	

Charts sold separately.



EV100

Universal & On/Off Loggers

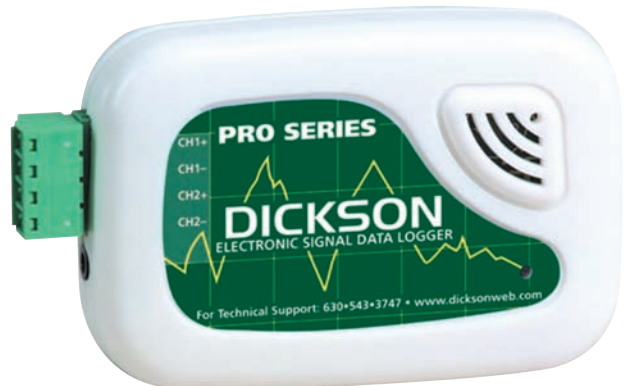
Great for pump monitoring!

Features

- Screw terminal connection
- LED indicator

ES120 Data storage 32,000 readings. Delayed start. Ranges 0 to 5V, 0 to 20mA.

EV100 Data storage 65,512 readings. Delayed start. Ranges 1120-240 VAC On/Off.



ES120

Software required and sold separately. For more information, please visit www.DicksonData.com. For on-site installation and for systems exceeding 10 units, call our Systems Specialists at **888.452.4626** for a quote.



VFC70

Vaccine Chart Recorder

VFC70/21

Features

- Easy-to-read special vaccine chart with circular bands highlighting the acceptable vaccine ranges of 35-46°F, 2-8°C
- LCD display shows current temperature for quick reference

VFC70 Fahrenheit model.

VFC21 Celsius model.

Calibration Options Available

Charts sold separately.

For charts and accessories visit www.DicksonData.com.

VFC320



Vaccine Data Logger

VFC320/325

Features

- LCD display for viewing current temperature and MIN/MAX readings
- Preset high/low, audible/visual alarms
- Temperature ranges: Internal -4 to 158°F (-20 to 70°C), External -40 to 158°F (-29 to 70°C)

VFC320 One Probe.

VFC325 Two Probes.

Calibration Options Available

Software required and sold separately. For more information, please visit www.DicksonData.com.

MM125 Two Probe
Temperature Indicator



Vaccine Alarm Thermometer

MM120/125

Features

- LCD display shows current temperature, MIN/MAX temperatures, a visual alert when in alarm mode and battery level indicator
- High/Low alarms
- Temperature range -58 to ±122°F (-50 to 50°C)

MM120 One Probe.

MM125 Two Probes.

Drug Temperature Chart Recorder

The solution to drug temperature monitoring!

Features

- Two years on one AA battery
- Compact size can easily fit into your refrigerator or freezer

DRG350 Range -20 to +122°F, -30 to +50°C.

Calibration Options Available

Charts and accessories sold separately.
For charts and accessories visit www.DicksonData.com.



DRG350

Blood and Tissue Bank Chart Recorder

Temperature monitoring for blood and tissue banks!

Features

- Remote probe
- AC power with battery back-up
- Relay contacts to incorporate into your Building Management System

Calibration Options Available



BBR625

MODEL	TEMPERATURE RANGES
BBR625	-50 to +50°F/C 0 to ±100°F/C -100 to 0°C 0 to 500°F

Charts sold separately. For charts and accessories, please visit www.DicksonData.com.

Stainless Steel Watertight Temperature Data Loggers

New generation of high temperature data logging!

We've heard what you had to say and improved this logger to make it even easier to use.

Features

- User-replaceable battery
- USB download capability
- Reinforced probe on the HT225 to prevent breakages
- IP68 rating
- Range: -40 to 257°F

Calibration Options Available

MODEL	LOGGER LG	LOGGER DIA	PROBE LG	PROBE DIA
HT200	5.36"	0.75"		
HT220	7.72"	0.75"	2.36"	0.19"
HT225	10.24"	0.75"	4.88"	0.11"

Software is required to setup logger and to download data. Software, purchased separately, is required for setup and downloading data. For all other accessories, visit www.DicksonData.com.



Software required and sold separately. For more information, please visit www.DicksonData.com.

Compact-Sized Data Loggers

Ideal when space is a concern!

Features

- USB connection
- Economical 6 and 12-pack
- One year battery life
- Ranges -4 to +158°F (-20 to +70°C)
- Accuracy ±1.8°F (±1°C)

Software is required to setup logger and to download data. Software, purchased separately, is required for setup and downloading data. For all other accessories, visit www.DicksonData.com.



SK550 Temperature



TK550 Temperature/Humidity

Calibration Options Available

Calibration Options Available



SK250 Temperature. Pack of six.
SK550 Temperature. Pack of twelve.

TK250 Temperature & Humidity. Pack of six.
TK550 Temperature & Humidity. Pack of twelve.



Software required and sold separately. For more information, please visit www.DicksonData.com.

Temperature Data Logger

- SM300** Range -4 to 158°F, -20 to 70°C. Accuracy $\pm 0.8^\circ\text{F}$.
- SM320*** Remote Probe. Range with Probe -300 to 2000°F. Accuracy $\pm 1.8^\circ\text{F}$.
- SM325*** Two Remote Probes. Range with Probe -300 to 2000°F. Accuracy $\pm 1.8^\circ\text{F}$.
- SM420** Remote Probe. Range -50 to 350°F, -45 to 176°C. Accuracy $\pm 0.5^\circ\text{F}$.



Calibration Options Available

SM325 Temperature Model With Two Remote Probes

Temperature/Humidity Data Logger

Industries & Applications

- Warehouses
- Archives
- Surgical Suites
- Laboratories

- TM320** Remote Probe. Range -4 to 158°F, -20 to 70°C. Accuracy $\pm 0.8^\circ\text{F}$.
- TM325** Remote Probe. Range -40 to 185°F, -40 to 85°C. Accuracy $\pm 0.8^\circ\text{F}$.

Calibration Options Available



TM325 Temperature Model With Remote Probe

Software required and sold separately. For more information, please visit www.DicksonData.com.
 *Temp Range using standard K-TC probe: -300 +500°F (A203 probe required for +2000°F range).

Temperature and Temperature/Humidity Data Logger

Start/Stop for precision reading!

Features

- LCD display of current and MIN/MAX readings
- High-speed USB connectivity
- User-replaceable battery
- Range -4 to 158°F

SP425 Temperature Logger. Digital Display. Accuracy $\pm 1.2^\circ\text{F}$. Range -4 to 158°F.

TP425 Temperature and Humidity Logger. Digital Display. Accuracy $\pm 0.8^\circ\text{F}$. Range -4 to 158°F.



SP425 Temperature Model

Calibration Options Available

Temperature and Temperature/Humidity Data Logger

Great for shipping or moving!

Features

- High/low alarm
- High-speed USB connectivity
- User-replaceable battery

SP125 Temperature Logger. Accuracy $\pm 1.2^\circ\text{F}$. Range -10 to 176°F.

SP175 Temperature Logger with Thermocouple Probe. Accuracy $\pm 1.8^\circ\text{F}$. Range -300 to 2000°F.

TP125 Temperature and Humidity Logger. Accuracy $\pm 0.8^\circ\text{F}$. Range -10 to 176°F.

Calibration Options Available



SP175

Software required and sold separately. For more information, please visit www.DicksonData.com.

*Temp Range using standard K-TC probe: -300 +500°F (A203 probe required for +2000°F range).

DICKSON

WE'RE READY TO TAKE YOUR ORDER!

1-800-323-2448 or online at www.DicksonData.com

PRSRT. STD.
U.S. Postage
PAID
The Dickson
Company

Dickson
930 South Westwood Avenue
Addison, Illinois 60101-4917

800 323 2448 tel
800 676 0498 fax
www.DicksonData.com



Digital Graph Shows Trends

Full control at your fingertips!

- Jumbo 4.1" x 5.5" touchscreen
- Zoom and scroll at the touch of the screen
- Audible/visual alarms
- USB and FLASH card data download
- Rechargeable battery backup
- Paperless. Everything you need at the touch of a finger!

FT520 Remote Probe. KT/C Probe Type. Range -300 to 2000F. Accuracy $\pm 1.8^\circ\text{F}$.

Calibration Options Available

FT520

3 Ways to Order

1 Online at www.tecpel.com; www.oka.com.tw

2 Call 886-2-27375866 Taiwan
speak to a Customer Service Representative

3 Fax to 886-2-2737-3343 Taiwan

All prices are subject to change without notice. In the event of a printing error, Dickson reserves the right to charge the correct price.
All shipments ship 2nd day unless otherwise requested.

